



SMART SOLUTIONS FOR A CHANGING WORLD

ANTENNAS

C A T A L O G U E



2023 EDITION

Index

GSM/GPRS/2G ANTENNAS	4
3G/UMTS ANTENNAS	8
4G/LTE ANTENNAS.....	20
4G/LTE MIMO ANTENNAS	38
5G ANTENNAS.....	45
5G MIMO ANTENNAS	48
WIFI 2.4/5 GHZ ANTENNAS.....	54
WIFI MIMO ANTENNAS	71
GNSS ANTENNAS.....	73
169 MHZ ANTENNAS	85
433 MHZ ANTENNAS	87
868/915 MHZ ANTENNAS	92
COMBI GSM+GPS ANTENNAS	104
COMBI GSM+GPS+WIFI ANTENNAS.....	106
COMBI 3G+GPS ANTENNAS.....	108
COMBI 3G+GPS/GLONASS+WIFI ANTENNAS.....	115
COMBI 4G+GPS/GLONASS ANTENNAS	118
COMBI 4G+WIFI ANTENNAS	120
COMBI 4G+GPS+WIFI ANTENNAS	122
COMBI 5G+WIFI ANTENNAS	126
COMBI GPS+WIFI ANTENNAS.....	128
COMBI GPS+TETRA ANTENNAS	130
RFID VHF ANTENNAS	133
RFID UHF ANTENNAS.....	135
RF CABLES & CONNECTORS.....	138

Terminology used for frequency bands

GSM2 = GSM/GPRS (Europe) 900/1800 MHz

GSM3 = GSM/GPRS/3G (Europe) 900/1800/2100 MHz

GSM4 = GSM/GPRS (Europe/USA): 800/900/1800/1900 MHz

GSM5 = GSM/GPRS/3G (Europe/USA): 800/900/1800/1900/2100 MHz

3G or UMTS = 2100 MHz

LTE or 4G = EU (800/900/1800/2100/2600 MHz); US (700/850/1700 (AWS)/1900 MHz)

5G = 800/900/1800/2100/2600/3500 MHz

ISM = 169/433/868 MHz

GSM/GPRS/2G ANTENNAS

MTX-Antenna STUB TARGAN GSM4

Stub antenna

- Frequency: 850/900/1800/1900 MHz
- Connectors: SMA M/FME F
- Gain: 1 dBi
- Dimensions: 54 mm (without connector)



ORDERING INFORMATION

118012138	MTX-Antenna STUB TARGAN QUAD GSM4 FME F R/A
118012139	MTX-Antenna STUB TARGAN QUAD GSM4 SMA M ST

MTX-Antenna Magnetic GSM2

Magnetic antenna 22/6 cm

- Frequency: 900/1800 MHz
- Connector: FME F/SMA M/other
- Gain: 21 cm 2.5 dBi/6cm 0 dBi
- Dimensions: 21/6 cm



ORDERING INFORMATION

118009000	MTX-Antenna Magnetic (6 & 22 cm) GSM2 FME F - RG174 - 3m
118009002	MTX-Antenna Magnetic (6 & 22 cm) GSM2 SMA M - RG174 - 3m
118009079	MTX-Antenna Magnetic (6 & 22cm) GSM2 FAKRA D Jack-F - RG174 - 3m
118009024	MTX-Antenna Magnetic 22cm GSM2 FME F - RG174 - 3m
118009042	MTX-Antenna Magnetic 22cm GSM2 MMCX M R/A - RG174 - 3m
118009203	MTX-Antenna Magnetic 22cm GSM2 SMA M - RG174 - 300mm
118009046	MTX-Antenna Magnetic 22cm GSM2 SMA M - RG174 - 3m
118009202	MTX-Antenna Magnetic 22cm GSM2 SMA M - RG174 - 5m
118009220	MTX-Antenna Magnetic 22cm GSM2 SMA M R/A - RG174 - 3m
118009003	MTX-Antenna Magnetic 6cm GSM2 FME F - RG174 - 3m
118009091	MTX-Antenna Magnetic 6cm GSM2 SMA M - RG174 - 3m
118009014	MTX-Antenna Magnetic (6 & 22 cm) GSM2 MMCX M R/A - RG174 - 3m NO LABEL

MTX-Antenna Magnetic Whip GSM4

Magnetic antenna 9 cm

- Frequency: 800/900/1800/1900 MHz
- Connector: SMA M/other
- Gain: 0 dBi
- Dimensions: 90 mm



ORDERING INFORMATION

118009247	MTX-Antenna Magnetic Whip L09 GSM4 SMA M - RG174 - 3m
118009225	MTX-Antenna Magnetic Whip L09 GSM4 SMA M - RG58 - 3.5m

MTX-Antenna Screwed ESFERA GSM4 IP67

Screwed antenna

- Frequency: 850/900/1800/1900 MHz
- Connector: FME F/SMA M/other
- Gain: 0 dBi
- Dimensions: 80x23 mm



ORDERING INFORMATION

118012111	MTX-Antenna Screwed WB20 GSM4 FME F - RG174 - 2m
118012112	MTX-Antenna Screwed WB20 GSM4 SMA M - RG174 - 2m

MTX-Antenna Adhesive BLADE 091 GSM2

Adhesive BLADE antenna

- Frequency: 900/1800 MHz
- Connector: FME F/SMA M/other
- Gain: 1 dBi
- Dimensions: 105x15 mm



ORDERING INFORMATION

118009149	MTX-Antenna Adhesive BLADE 091 GSM2 FME F - RG174 - 3m
118009029	MTX-Antenna Adhesive BLADE 091 GSM2 FME F - RG174 - 5m
118009112	MTX-Antenna Adhesive BLADE 091 GSM2 MMCX M R/A - RG174 - 200mm
118009111	MTX-Antenna Adhesive BLADE 091 GSM2 MMCX M R/A - RG174 - 3m
118009028	MTX-Antenna Adhesive BLADE 091 GSM2 SMA M - RG174 - 3m

MTX-Antenna Adhesive BLADE GSM4

Adhesive BLADE antenna

- Frequency: 824-960/1770-1990 MHz
- Connector: FME F/SMA M/other
- Gain: 2 dBi
- Dimensions: 115x22 mm



ORDERING INFORMATION

118007039	MTX-Antenna Adhesive BLADE GSM4 - RG174 - 3m
118007040	MTX-Antenna Adhesive BLADE GSM4 FAKRA D Jack-F - RG174 - 2m
118007006	MTX-Antenna Adhesive BLADE GSM4 MMCX M R/A - RG174 - 3m
118007037	MTX-Antenna Adhesive BLADE GSM4 MMCX M ST - RG174 - 3m
118007024	MTX-Antenna Adhesive BLADE GSM4 SMA M - RG174 - 300 mm
118007015	MTX-Antenna Adhesive BLADE GSM4 SMA M - RG174 - 4m

3G/UMTS ANTENNAS

MTX-Antenna STUB GSM5

Stub antenna

- Frequency: 824~894/880~960/1710~1990/1920~2170 MHz
- Connector: FME F/SMA M/other
- Gain: 2 dBi
- Dimensions: 55 mm (without connector)



ORDERING INFORMATION

118007013	MTX-Antenna STUB GSM5 FME F
118007032	MTX-Antenna STUB GSM5 SMA M

MTX-Antenna STUBSW GSM5

Stub antenna

- Frequency: 850/900/1800/1900/2100 MHz
- Connector: FME F/SMA M
- Gain: 3 dBi
- Dimensions: 170 mm (without connector)



ORDERING INFORMATION

118009127	MTX-Antenna STUBSW GSM5 FME F
118009126	MTX-Antenna STUBSW GSM5 SMA M

MTX-Antenna STUBSW PTR GSM5

Stub antenna

- Frequency: 824-960/1710-2170 MHz
- Connector: FME F/SMA M
- Gain: 1.5 dBi
- Dimensions 171x18 mm (without connector)



ORDERING INFORMATION

118012114	MTX-Antenna STUBSW PTR2100 GSM5 SMA M
-----------	---------------------------------------

MTX-Antenna STUBSW TBR GSM3

Stub antenna

- Frequency: 900/1800/2100 MHz
- Connector: FME F/SMA M
- Gain: 2 dBi
- Dimensions: 138x13 mm (without connector)



ORDERING INFORMATION

118012110	MTX-Antenna STUBSW TBR2100 GSM3 SMA M
-----------	---------------------------------------

MTX-Antenna Magnetic Whip L20 GSM5 3dBi

Magnetic antenna

- Frequency: 850/900/1800/1900/2100 MHz
- Connector: FME F/SMA M
- Gain: 3 dBi
- Dimensions: 200 mm



ORDERING INFORMATION

118009097	MTX-Antenna Magnetic Whip L20 GSM5 3dBi FME F - RG174 - 200mm
118009034	MTX-Antenna Magnetic Whip L20 GSM5 3dBi FME F - RG174 - 3m
118009215	MTX-Antenna Magnetic Whip L20 GSM5 3dBi MMCX M R/A - RG174 - 3m
118009140	MTX-Antenna Magnetic Whip L20 GSM5 3dBi SMA M - RG174 - 3m

MTX-Antenna Magnetic Whip L30 GSM3 5dBi

Magnetic antenna

- Frequency: 900/1800/2100 MHz
- Connector: FME F/SMA M
- Gain: 5 dBi
- Dimensions: 300 mm



ORDERING INFORMATION

118009259	MTX-Antenna Magnetic Whip L30 GSM3 5dBi FME F - LL195 - 10m
118009041	MTX-Antenna Magnetic Whip L30 GSM3 5dBi SMA M - RG174 - 3m
118009283	MTX-Antenna Magnetic Whip L30 GSM3 5dBi FME F - RG174 - 3m
118009299	MTX-Antenna Magnetic Whip L30 GSM3 5dBi SMA M - RG174 - 4m
118009307	MTX-Antenna Magnetic Whip L30 GSM5 5dBi SMAM - RG58 - 20m

MTX-Antenna Magnetic Whip L50 GSM5 7dBi

Magnetic antenna

- Frequency: 800/900/1800/1900/2100 MHz
- Connector: FME F/SMA M
- Gain: 7 dBi
- Dimensions: 480 mm



ORDERING INFORMATION

118009255	MTX-Antenna Magnetic Whip L50 GSM5 7dBi FME F - RG174 - 3m
118009243	MTX-Antenna Magnetic Whip L50 GSM5 7dBi FME F - RG58U - 5m
118009212	MTX-Antenna Magnetic Whip L50 GSM5 7dBi SMA M - RG174 - 3m
118009226	MTX-Antenna Magnetic Whip L50 GSM5 7dBi SMA M - RG58 - 5m

MTX-Antenna Magnetic STUB L07 GSM5

Magnetic antenna

- Frequency: 800/900/1800/1900/2100 MHz
- Connector: FME F/SMA M
- Gain: 2 dBi
- Dimensions: 70 mm



ORDERING INFORMATION

118007020	MTX-Antenna Magnetic STUB L07 GSM5 FME F - RG174 - 2.5m
118007021	MTX-Antenna Magnetic STUB L07 GSM5 SMA M - RG174 - 2.5m

MTX-Antenna Magnetic STUB L07 OPN GSM5

Magnetic antenna

- Frequency: 824-960/1710-2170 MHz
- Connector: SMA M
- Gain: 2 dBi
- Dimensions: 71.5x30 mm



ORDERING INFORMATION

118016074	MTX-Antenna Magnetic STUB L07 OPN301M GSM5 SMA M - RG174 - 600mm
-----------	--

MTX-Antenna Magnetic STUB L09 PENTAMAG GSM5

Magnetic antenna

- Frequency: 800/900/1800/1900/2100 MHz
- Connector: FME F/SMA M
- Gain: 2 dBi
- Dimensions: 90 mm



ORDERING INFORMATION

118012189	MTX-Antenna Magnetic STUB L09 PENTAMAG GSM5 FME F - RG174 - 3m
118012121	MTX-Antenna Magnetic STUB L09 PENTAMAG GSM5 SMA M - RG174 - 3m
118012326	MTX-Antenna Magnetic STUB L09 PENTAMAG GSM5 SMA M R/A - RG174 - 3m

MTX-Antenna Magnetic STUB L11 GSM3

Magnetic antenna

- Frequency: 900/1800/2100 MHz
- Connector: FME F/SMA M
- Gain: 2.5 dBi
- Dimensions: 110 mm



ORDERING INFORMATION

118009051	MTX-Antenna Magnetic STUB L11 GSM3 SMA M - RG174 - 3m
118009322	MTX-Antenna Magnetic STUB L11 GSM3 MCX M R/A - RG174 - 10m
118009311	MTX-Antenna Magnetic STUB L11 GSM3 MCX M R/A - RG174 - 3m

MTX-Antenna Screwed CPO GSM5

Screwed antenna

- Frequency: 870-960/1710-2170 MHz
- Connector: FME F/SMA M/other
- Gain: 3 dBi
- Dimensions: 102x33.5 mm



ORDERING INFORMATION

118012171	MTX-Antenna Screwed CPO GSM5 FME F - RG174 - 2m
118012191	MTX-Antenna Screwed CPO GSM5 FME F - RG174 - 3m
118012324	MTX-Antenna Screwed CPO GSM5 SMA M - RG174 - 1m
118012113	MTX-Antenna Screwed CPO GSM5 SMA M - RG174 - 2m
118012176	MTX-Antenna Screwed CPO GSM5 SMA M - RG174 - 3m
118012162	MTX-Antenna Screwed CPO GSM5 SMA M R/A - RG174 - 2m
118012240	MTX-Antenna Screwed CPO GSM5 SMA M R/A - RG174 - 5m
118012362	MTX-Antenna Screwed CPO GSM5 U.FL - 500mm

MTX-Antenna Screwed ESFERA GSM5

Screwed antenna

- Frequency: 800/900/1800/1900/2100 MHz
- Connector: FME F/SMA M/other
- Gain: 0 dBi
- Dimensions: 53x23 mm



ORDERING INFORMATION

118009170	MTX-Antenna Screwed ESFERA GSM5 - RG174 - 200mm
118009169	MTX-Antenna Screwed ESFERA GSM5 FME F - RG174 - 2m
118009153	MTX-Antenna Screwed ESFERA GSM5 SMA M - RG174 - 2m
118009219	MTX-Antenna Screwed ESFERA GSM5 SMA M - RG174 - 600mm
118009302	MTX-Antenna Screwed ESFERA GSM5 FME F - RG174 - 3m
118009289	MTX-Antenna Screwed ESFERA (GSM5 FME F) + (GPS SMA M) - RG174 - 150mm
118009147	MTX-Antenna Screwed ESFERA (GSM5 SMA M) + (GPS SMA M) - RG174 - 3m

MTX-Antenna Screwed ESFERA Block GSM5

Screwed antenna

- Frequency: 800/900/1800/1900/2100 MHz
- Connector: FME F/SMA M/other
- Gain: 0 dBi
- Dimensions 53x23 mm



ORDERING INFORMATION

118009231	MTX-Antenna Screwed ESFERA IP67 GSM5 - RG174 - 200mm
118009271	MTX-Antenna Screwed ESFERA IP67 GSM5 U.FL 1.37 - 500mm
118009308	MTX-Antenna Screwed ESFERA IP67 GSM5 SMA M - RG174 - 2m

MTX-Antenna Screwed OPN6004B GSM5

Screwed antenna

- Frequency: 800/900/1800/1900/2100 MHz
- Connector: SMA M
- Gain: 2.14 dBi
- Dimensions: 80.5x75.5 mm



ORDERING INFORMATION

118016039	MTX-Antenna Screwed OPN6004B GSM5 - SMA M - 2.5m
118016154	MTX-Antenna Screwed OPN6004B TH19 GSM5 SMA M - RG174 - 2.5m

MTX-Antenna Screwed OPN660 GSM5+GPS

Screwed antenna

- Frequency: 800/900/1800/1900/2100 MHz
- Connector: SMA M
- Gain: ~-3.6, ~-3.3 dBi
- Dimensions: 77.3x15 mm



ORDERING INFORMATION

118016134	MTX-Antenna Screwed OPN660 (GSM5 SMA M)+ (GPS SMA M) - RG174 - 3m
118016133	MTX-Antenna Screwed OPN660 (GSM5 SMA M)+ (GPS SMA M) - RG174 - 5m

MTX-Antenna Adhesive BLADE OPN5004 GSM5

Adhesive antenna

- Frequency: 800/900/1800/1900/2100 MHz
- Connector: SMA M
- Gain: 4 dBi
- Dimensions: 126.5x22 mm



ORDERING INFORMATION

118016168	MTX-Antenna Adhesive BLADE OPN5004 GSM5 4dBi SMA M - RG174 - 800mm
-----------	--

MTX-Antenna Screwed ROOFBALL GSM3

Screwed antenna

- Frequency: 900/1800/2100 MHz
- Connector: FME F/SMA M
- Gain: 0 dBi
- Dimensions: 53x30x30 mm



ORDERING INFORMATION

118009045	MTX-Antenna Screwed ROOFBALL GSM3 FME F - RG174 - 5m
118009063	MTX-Antenna Screwed ROOFBALL GSM3 MMCX M R/A - RG174 - 3m
118009049	MTX-Antenna Screwed ROOFBALL GSM3 SMA M - RG174 - 5m

MTX-Antenna Screwed Stub WallMount GSM5

Wall mount, water proof antenna

- Frequency: 824-960/1710-2170MHz
- Connector: N F
- Gain: 2 dBi
- Polarisation: linear-vertical
- Dimensions: 116 mm + connector + bracket



ORDERING INFORMATION

118012327	MTX-Antenna STUB Screwed WCO GSM5 N F
118012377	MTX-Antenna STUB Screwed WCO GSM5 SMA M - RG240 - 12m

MTX-Antenna Screwed STUBSW GSM5

Screwed stub 1/2 wave antenna

- Frequency: 824-960/1710-2170 MHz
- Connector: U.FL/other
- Gain: 1.5 dBi
- Dimensions: 183x18 mm approx. + mouting stud



ORDERING INFORMATION

118012379	MTX-Antenna STUBSW Screwed PTF GSM5 + Cable U.FL - 125mm
-----------	--

MTX-Antenna Adhesive BLADE GSM5

Adhesive antenna

- Frequency: 800/900/1800/1900/2100 MHz
- Connector: FME F/SMA M/other
- Gain: 2 dBi
- Dimensions: 115x22 mm



ORDERING INFORMATION

118007003	MTX-Antenna Adhesive BLADE GSM5 FME F - RG174 - 3 m
118014024	MTX-Antenna Adhesive BLADE GSM5 SMA M - RG174 - 1.5m
118014022	MTX-Antenna Adhesive BLADE GSM5 SMA M - RG174 - 150mm
118007002	MTX-Antenna Adhesive BLADE GSM5 SMA M - RG174 - 3 m

MTX-Antenna Adhesive BLADEMID GSM3

Adhesive antenna

- Frequency: 900/1800/2100 MHz
- Connector: FME F/SMA M/other
- Gain: 2.5 dBi
- Dimensions: 110x18 mm



ORDERING INFORMATION

118009047	MTX-Antenna Adhesive BLADEMID GSM3 FME F - RG174 - 2.5m
118009114	MTX-Antenna Adhesive BLADEMID GSM3 SMA M - RG174 - 2.5m
118009234	MTX-Antenna Adhesive BLADEMID GSM3 SMA M R/A - RG174 - 2.5m

MTX-Antenna Adhesive ESFERA GSM5+GPS

Adhesive ESFERA antenna

- Frequency: 800/900/1800/1900/2100 MHz
- Connector: MMCX M/SMA M
- Gain: 0 dBi
- Dimensions: Ø50.40x17 mm



ORDERING INFORMATION

118009030

MTX-Antenna Adhesive ESFERA (GSM5 MMCX M) + (GPS SMA M) - RG174 - 5m

MTX-Antenna Adhesive OPN4800 GSM5+GPS

Adhesive antenna

- Frequency: 800/900/1800/1900/2100 MHz
- Connector: FME F/SMA M
- Gain: ~3.0, ~1.3 dBi
- Dimensions: 83x35x13.3 mm



ORDERING INFORMATION

118016137

MTX-Antenna Adhesive OPN4800 (GSM5 FME F) + (GPS SMA M) - RG174 - 3m

MTX-Antenna Omni FIBERGLASS GSM5

Omni FIBERGLASS antenna

- Frequency: 850/900/1800/1900/2100 MHz
- Connector: N F
- Gain: 7 dBi
- Dimensions: 756 mm



ORDERING INFORMATION

118009258

MTX-Antenna Omni FIBERGLASS GSM5 7dBi N F

118008202

MTX-Cable FME F - N M - LL195 - 5m

118008552

MTX-Cable SMA M - N M - LL195 - 5m

118009068

MTX-Antenna Omni FIBERGLASS GSM5 7dBi N F + FME F - N M - LL195 - 5m

118009131

MTX-Antenna Omni FIBERGLASS GSM5 7dBi N F + SMA M - N M - LL195 - 5m

118009218

MTX-Antenna Omni FIBERGLASS GSM5 7dBi N F + SMA M - N M - LMR400 - 5m

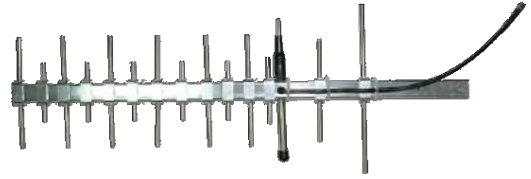
118009194

MTX-Antenna Omni FIBERGLASS GSM5 7dBi N F + SMA M - N M - LL195 - 10m

MTX-Antenna YAGI GSM5

Yagi antenna

- Frequency: 800/900/1800/1900/2100 MHz
- Connector: SMA M
- Gain: 10 dBi
- Dimensions: 351 mm



ORDERING INFORMATION

118009137	MTX-Antenna YAGI GSM5 10dBi SMA M + Cable SMA F BH - FME F - LL195 - 10m
118009129	MTX-Antenna YAGI GSM5 10dBi SMA M + Cable SMA M - SMA F BH - LL195 - 10m
118009264	MTX-Antenna YAGI GSM5 10dBi SMA M - 150mm
118008556	MTX-Cable SMA M - SMA F BH - LL195 - 10m
118008557	MTX-Cable SMA M - SMA F BH - LL195 - 5m
118008549	MTX-Cable SMA F - FME F - LL195 - 10m
118008548	MTX-Cable SMA F - FME F - LL195 - 5m

MTX-Antenna Internal Flexible GSM5

Internal antenna

- Frequency: 850/900/1800/1900/2100 MHz
- Connector: U.FL/other
- Gain: 0 dBi
- Dimensions: 70x20x0.5 mm



ORDERING INFORMATION

118009223	MTX-Antenna Internal Adhesive Flexible GSM5 - U.FL 100mm
-----------	--

MTX-Antenna Internal OPN Flexible Polymer GSM5

Internal antenna

- Frequency: 824-960/1710-2170 MHz
- Connector: U.FL/other
- Gain: 2 dBi
- Dimensions: 70.4x26.4x0.1 mm



ORDERING INFORMATION

118016114	MTX-Antenna Internal Adhesive OPNF0304 GSM5 U.FL - 80mm
-----------	---

MTX-Antenna Internal Adhesive OPNF0604 GSM5

Internal adhesive antenna

- Frequency: 800/900/1800/1900/2100 MHz
- Connector: U.FL
- Gain: ~0.7, ~0.7 dBi
- Dimensions: 74.9x8.1x0.1 mm



ORDERING INFORMATION

118016163

MTX-Antenna Internal Adhesive OPNF0604 GSM5 U.FL1.37 - 100mm

MTX-Antenna Internal OPNP1004 GSM5

Internal antenna

- Frequency: 800/900/1800/1900/2100 MHz
- Connector: U.FL
- Gain: 1.3 dBi
- Dimensions: 37.8x7.2x0.8 mm



ORDERING INFORMATION

118016165

MTX-Antenna Internal OPNP1004 GSM5 1.3dBi U.FL1.37 - 100mm

4G/LTE ANTENNAS

MTX-Antenna STUBFLATSW LTE700/2600

Stub antenna

- Frequency: 699-960/1710-2690 MHz
- Connector: SMA M
- Gain: 2.9 dBi
- Dimensions: 135x19x10 mm



ORDERING INFORMATION

118016087	MTX-Antenna STUBFLATSW OPNW1124 GSM5+LTE700/2600 2.9 dBi SMA M
-----------	--

MTX-Antenna STUBSW OPN1024 GSM5+LTE700/2700

Stub antenna

- Frequency: 698-960, 1710-2170, 2500-2700
- Connector: SMA M
- Gain: ~0.1, ~2.9, ~4.6 (dBi)
- Dimensions: Ø 10 × 71



ORDERING INFORMATION

118016185	MTX-Antenna STUBSW OPN1024 GSM5+LTE700/2700 3dbi SMA M
-----------	--

MTX-Antenna STUBSW LTE2600

Stub antenna

- Frequency: 824-960/1710-1880/2550-2650 MHz
- Connector: SMA M
- Gain: 5 dBi
- Dimensions: 280 mm



ORDERING INFORMATION

118009240	MTX-Antenna STUBSW GSM5+LTE2600 5dbi SMA M
118009224	MTX-Antenna STUBSW GSM5+LTE2600 5dbi SMA M + MagneticBase SMA M - RG174 - 2m
118009242	MTX-Antenna STUBSW GSM5+LTE2600 5dbi SMA M + MagneticBase SMA M - RG174 - 3m
118009224	MTX-Antenna STUBSW GSM5+LTE2600 5dbi SMA M + MagneticBase SMA M - RG174 - 2m

MTX-Antenna STUBSW PTR LTE2600

Stub antenna

- Frequency: 806-960/1710-2170/2500-2700 MHz
- Connector: SMA M
- Gain: 1.5 dBi
- Dimensions: 171x18 mm



ORDERING INFORMATION

118012188	MTX-Antenna STUBSW PTR GSM5+LTE2700 SMA M
-----------	---

MTX-Antenna STUBSW WTR LTE700/2600

Stub antenna

- Frequency: 690-960/1710-2700 MHz
- Connector: SMA M
- Gain: 1 dBi
- Dimensions: 171x18 mm



ORDERING INFORMATION

118012332	MTX-Antenna STUBSW WTR GSM5+LTE700/2600 SMA M
-----------	---

MTX-Antenna STUBSW_EA LTE2600

Stub antenna

- Frequency: 824-960/1710-1880/2550-2650 MHz
- Connector: SMA M
- Gain: 5 dBi
- Dimensions: 270x17 mm



ORDERING INFORMATION

118009275	MTX-Antenna STUBSW-EA GSM5+LTE2600 5dbi SMA M
118009209	MTX-Antenna STUBSW-EA GSM5+LTE2600 5dbi SMA M + MagneticBase FME F - RG174 - 3m

MTX-Antenna STUB Screwed GSM5+LTE700/2700

Stub antenna

- Frequency: 700/800/900/1800/2100/2600/2700 MHz
- Connector: U.FL
- Dimensions: 83.5mm length + 150mm cable



ORDERING INFORMATION

118009284	MTX-Antenna STUB Screwed GSM5+LTE700/2700 - Cable U.FL 1.13 - 150mm
-----------	---

MTX-Antenna STUB Screwed OPN2124 GSM5+868+LTE700/2600

Stub antenna

Frequency: 700/800/868/900/1800/1900/2100/2600MHz

- Connector: Pigtail
- Gain: ~4.1, ~2.9, ~0.6 dBi
- Dimensions: 271×30×115 mm



ORDERING INFORMATION

118016150	MTX-Antenna STUB Screwed OPN2124 GSM5+868+LTE700/2600 Pigtail - RG58 - 2m
118016128	MTX-Antenna STUB Screwed OPN2124 GSM5+868+LTE700/2600 SMA M - RG58 - 3m
118016236	MTX-Antenna STUB Screwed OPN2124 GSM5+LTE700/2600 SMA M - LL195 - 10m
118016239	MTX-Antenna STUB Screwed OPN2124 GSM5+LTE700/2600 SMA M - LL195 - 20m
118016238	MTX-Antenna STUB Screwed OPN2124 GSM5+LTE700/2600 SMA M - LL195 - 5m

MTX-Antenna STUB OPN868 GSM5+LTE700/2600

Stub antenna

- Frequency: 698-960, 1710-2170, 2500-2700
- Connector: N M
- Gain: ~4.1, ~2.9, ~0.6 (dBi)
- Dimensions: 232 × Ø 20 (Ø 16)



ORDERING INFORMATION

118016202	MTX-Antenna STUB OPN868 GSM5+LTE700/2600 MHz 3dBi N M
-----------	---

MTX-Antenna STUB OPN GSM5+LTE700/2600

Stub antenna

- Frequency: 698-960, 1710-2170, 2500-2700
- Connector: SMA M, SMA M R/A
- Gain: ~1.5, ~3.5, ~-6.3 (dBi)
- Dimensions: 48 × Ø 9 mm



ORDERING INFORMATION

118016242	MTX-Antenna Stub OPN0B24 GSM5-LTE700/2600 2dBi SMA M
118016229	MTX-Antenna Stub OPN0B24 GSM5-LTE700/2600 2dBi SMA M R/A

MTX-Antenna STUBBY GSM5+LTE700/2600

Stub antenna

- Frequency: 700/800/900/1800/1900/2100/2600 MHz
- Connector: SMA M, SMA M R/A
- Gain: 1.5 dBi
- Dimensions: 53x7 mm



ORDERING INFORMATION

118012390	MTX-Antenna STUBBY GSM5+LTE700/2600 1/1.5 dBi SMA M
118012391	MTX-Antenna STUBBY GSM5+LTE700/2600 1/1.5 dBi SMA M R/A
118009286	MTX-Antenna STUBBY GSM5+LTE700/2700 SMA M R/A

MTX-Antenna STUBDUCKSW GSM5+LTE700/2700

Stub antenna

- Frequency: 700/800/900/1800/1900/2100/2600/2700 MHz
- Connector: SMA M
- Gain: 5 dBi
- Dimensions: 233x24 mm



ORDERING INFORMATION

118009317	MTX-Antenna STUBDUCKSW GSM5+LTE700/2700 5dbi SMA M
-----------	--

MTX-Antenna Magnetic Whip GSM5+LTE700/2700

Magnetic antenna

- Frequency: 700/800/900/1800/1900/2100/2600/2700 MHz /2.6GHz to 2.7GHz
- Connector: SMA M
- Gain: 7 dBi
- Dimensions: 403 x 81 mm



ORDERING INFORMATION

118009325	MTX-Antenna Magnetic Whip L40 GSM5+LTE700/2700 7dBi SMA M - LL195 - 3m
118009348	MTX-Antenna Magnetic Whip L33 GSM5+LTE700/2600 5dBi SMA M - LL195 - 10m

MTX-Antenna Magnetic Whip L33 GSM5+LTE700/2600

Magnetic antenna

- Frequency: 700/800/900/1800/1900/2100/2600 MHz
- Connector: SMA M
- Gain: 5 dBi
- Dimensions: 327.4x40.7 mm



ORDERING INFORMATION

118009287	MTX-Antenna Magnetic Whip L33 GSM5+LTE700/2600 5dBi SMA M - LL195 - 3m
-----------	--

MTX-Antenna Magnetic STUB L11 L-MAG LTE700/2600

Magnetic antenna

- Frequency: 690-960/1710-2700 MHz
- Connector: FME F/SMA M
- Gain: 2.0 dBi/4 dBi
- Dimensions: 110x 30 mm LxDiam
- Additional: requires ground plane



ORDERING INFORMATION

118012355	MTX-Antenna Magnetic STUB L11 L-MAG GSM5+LTE700/2600 SMA M - RG174 - 3m
-----------	---

MTX-Antenna Magnetic STUB JC L12 GSM5+LTE700/2700

Magnetic antenna

- Frequency: 700/800/900/1800/1900/2100/2600/2700 MHz
- Connector: SMA M
- Gain: 2 dBi
- Dimensions: 133.8x29.5 mm



ORDERING INFORMATION

118006104	MTX-Antenna Magnetic STUB JC L12 GSM5+LTE700/2700 2dBi SMA M - RG174 - 3m
-----------	---

MTX-Antenna Magnetic STUB L9 GSM5+LTE2700

Magnetic antenna

- Frequency: 800/900/1800/1900/2100/2600/2700 MHz
- Connector: SMA M
- Gain: 3 dBi
- Dimensions: 89x29 mm



ORDERING INFORMATION

118009296	MTX-Antenna Magnetic STUB L9 GSM5+LTE2700 3dBi SMA M - RG174 - 2m
-----------	---

MTX-Antenna Screwed Button GSM5+LTE700/2700

Screwed antenna

- Frequency: 700/800/900/1800/1900/2100/2600/2700 MHz
- Connector: SMA M
- Gain: 4.3 dBi
- Dimensions: 62.7x27.5 mm



ORDERING INFORMATION

118012415	MTX-Antenna Screwed Button GSM5+LTE700/2700 4.3dBi SMA M - RG174 - 2m
-----------	---

MTX-Antenna Screwed CLO GSM5+LTE700/2600

Screwed antenna

- Frequency: 700/800/900/1800/1900/2100/2600 MHz
- Connector: SMA M R/A
- Gain: 3.7 dBi
- Dimensions: 106x33.5 mm



ORDERING INFORMATION

118012392	MTX-Antenna Screwed CLO GSM5+LTE700/2600 3.7dBi SMA M R/A - RG174 - 2m
-----------	--

MTX-Antenna Screwed DASH-1 GSM5+LTE700/2700

Screwed antenna

- Frequency: 700/800/900/1800/1900/2100/2600/2700 MHz
- Connector: SMA M
- Gain: 4 dBi
- Dimensions: 258x13x34 mm



ORDERING INFORMATION

118010115	MTX-Antenna Screwed DASH-1 GSM5+LTE700/2700 4dBi SMA M - RG174 - 1m
-----------	---

MTX-Antenna Screwed ESFERA IP67 GSM5+LTE700/2700

Screwed antenna

- Frequency: 700/800/900/1800/1900/2100/2600/2700 MHz
- Connector: U.FL/SMA M
- Gain: 0-3 dBi
- Dimensions: 524.6x54.4 mm



ORDERING INFORMATION

118009319	MTX-Antenna Screwed ESFERA IP67 GSM5+LTE700/2700 0-3dBi U.FL 1.37 - 500mm
118009337	MTX-Antenna Screwed ESFERA IP67 GSM5+LTE700/2700 0-3dBi SMA M - RG174 - 3m

MTX-Antenna Screwed GSM5+LTE700/2600

Screwed antenna

- Frequency: 700/800/900/1800/1900/2100/2600 MHz
- Connector: SMA M
- Gain: 0-4 dBi
- Dimensions: 100x26 mm



ORDERING INFORMATION

118009304

MTX-Antenna Screwed GSM5+LTE700/2600 0-4dBi SMA M - RG174 -2m

MTX-Antenna Screwed OPN LTE700/2600

Screwed antenna

- Frequency: 698-960/1710-2170/2500-2690 MHz
- Connector: SMA M and other
- Gain: 3 dBi
- Dimensions: 77.3x65.5 mm



ORDERING INFORMATION

118016102

MTX-Antenna Screwed OPN6A24 GSM5+LTE700/2600 FME F - LMR100 - 5m

MTX-Antenna Screwed OPN6024B GSM5+LTE700/2600

Screwed antenna

- Frequency: 700/800/900/1800/1900/2100/2600 MHz
- Connector: SMA M
- Gain: 1.8-4.4 dBi
- Dimensions: 80x74 mm



ORDERING INFORMATION

118016139

MTX-Antenna Screwed OPN6024B GSM5-LTE700/2600 - SMA M - 2m

MTX-Antenna Screwed OPN7724 GSM5+LTE700/2600

Screwed antenna

- Frequency: 700/800/900/1800/1900/2100/2600 MHz
- Connector: SMA M
- Gain: 4 dBi
- Dimensions: Ø60x69 mm



ORDERING INFORMATION

118016170

MTX-Antenna Screwed OPN7724 GSM5-LTE700/2600 4dBi SMA M - LL100 - 2m

MTX-Antenna Screwed STUB WallMount 868+LTE700/2600

Screwed antenna

- Frequency: 698-960/1710-2170/2500-2700 MHz
- Connector: SMA M/other
- Average gain: 2.3/2.9/3.8 dBi
- Power Rating: 25W
- Dimensions: 240x115x30 mm (max.)



ORDERING INFORMATION

118016033

MTX-Antenna STUB Screwed OPN205 GSM5+868+LTE700/2600 Pigtail - RG58 - 2m

118016035

MTX-Antenna STUB Screwed OPN205 GSM5+868+LTE700/2600 SMA M - RG58 - 5m

118016177

MTX-Antenna STUB Screwed OPN205 GSM5+868+LTE700/2700 SMA M RP - RG58 - 3m

MTX-Antenna Screwed OPN7750 GSM5+LTE700/2700+2.4/5GHz+GPS-GLN

Screwed antenna

- Frequency: 700/800/900/1800/1900/2100/2600/2700 MHz, 2.4/5 GHz
- Connector: U.FL
- Average gain: ~2.0, ~4.5, ~3.7 dBi
- Dimensions: Ø60x69 mm



ORDERING INFORMATION

118016174

MTX-Antenna Screwed OPN7750 (GSM5+LTE700/2700 U.FL)+(2.4/5 GHz U.FL)+(GPS-GLN U.FL) RG178 -200mm

MTX-Antenna Adhesive Blade OPN GSM5-LTE700/2600

Adhesive Blade antenna

- Frequency: 698-960/1710-2170/2500-2700 MHz
- Connector: SMA M and other
- Gain: 3 dBi
- Dimensions: 117.4x12.5x6.5 mm



ORDERING INFORMATION

118016094	MTX-Antenna Adhesive BLADEMID OPN5224 c SMA M - RG174 -250mm
118016098	MTX-Antenna Adhesive BLADEMID OPN5224 GSM5-LTE700/2600 SMA M R/A - RG174 -140mm

MTX-Antenna Adhesive Blade J17 GSM5+LTE700/2700

Adhesive Blade antenna

- Frequency: 700/800/900/1800/1900/2100/2600/2700 MHz
- Connector: SMA M
- Gain: 2 dBi
- Dimensions: 104.6x5 mm



ORDERING INFORMATION

118006105	MTX-Antenna Adhesive Blade J17 GSM5+LTE700/2700 2dBi SMA M - RG174 - 3m
-----------	---

MTX-Antenna Adhesive Blade OPN5024 GSM5+LTE700/2600

Adhesive Blade antenna

- Frequency: 700/800/900/1800/1900/2100/2600 MHz
- Connector: SMA M
- Gain: 4 dBi
- Dimensions: 116x6.7 mm



ORDERING INFORMATION

118016169	MTX-Antenna Adhesive BLADE OPN5024 GSM5-LTE700/2600 4dBi SMA M - RG174 -800mm
118016226	MTX-Antenna Adhesive BLADE OPN5024 GSM5-LTE700/2600 4dBi MMCX - RG174 - 3m

MTX-Antenna OMNI-280 LTE700/2600 /2.4GHz

Omni antenna

- Frequency: 698-960/1710-2700/3400-3800 MHz
- Connector: SMA M
- Gain: 3 dBi
- Dimensions: 154 mm x 51 mm
- Mounted: IP-67, L-mount included, pole/wall, magnetic/velcro/adhesive



ORDERING INFORMATION

118010112

MTX-Antenna Omni-280 GSM5+LTE700/2700+2.4GHz 3dBi SMA M - RG58 - 1m

MTX-Antenna OMNI-292 GSM5+LTE700/2700

Omni antenna

- Frequency: 700/800/900/1800/1900/2100/2600/2700 MHz
- Connector: N F
- Gain: 8 dBi
- Dimensions: 646x71mm



ORDERING INFORMATION

118010126

MTX-Antenna Omni-292 GSM5+LTE700/2700+2.4GHz 8dBi N F

MTX-Antenna OMNI-600 410+GSM5+LTE700/2700

Omni antenna

- Frequency: 700/800/900/1800/1900/2100/2600/2700 MHz
- Connector: SMA M
- Gain: 6.5 dBi
- Dimensions: 700x150x100 mm



ORDERING INFORMATION

118010125

MTX-Antenna Omni-600 410+GSM5+LTE700/2700+3.8GHz 6.5dBi SMA M - LL195 - 5m

MTX-Antenna OMNIFIBERGLASS SO GSM5+LTE700/2600

Omni Fiberglass antenna

- Frequency: 700/800/900/1800/1900/2100/2600 MHz
- Connector: N F
- Gain: 4 dBi
- Dimensions: 300 mm



ORDERING INFORMATION

600005019

MTX-Antenna OmniFIBERGLASS SO GSM5+LTE700/2600MHZ 4dBi N F

MTX-Antenna OMNIFIBERGLASS EM GSM5+LTE700/2700

Omni FIBERGLASS antenna

- Frequency: 700/800/900/1800/2100/2600/2700 MHz
- Connector: SMA M (cable) NF(antenna)
- Gain: 8 dBi
- Dimensions: 756 × 34 Ø mm



ORDERING INFORMATION

118009362

MTX-Antenna Omni Fiberglass EM GSM5+LTE700/2700 8dBi SMA M -LL195 - 5m

118009352

MTX-Antenna Omni Fiberglass EM GSM5+LTE700/2700 8dBi SMA M -LL195 - 10m

MTX-Antenna Marine OMNI-291 LTE452/2600/2.4GHz

Marine Omni antenna

- Frequency: 450-470/690-960/1710-2700 MHz
- Connector: N F
- Gain: 7 dBi
- Polarization: linear vertical
- Dimensions: 560x75 mm
- Mounted: IP-67, L-mount included, good signal output 70km out at sea



ORDERING INFORMATION

118010101

MTX-Antenna Marine Omni-291 GSM5+LTE452/2700+2.4GHz 7dBi

MTX-Antenna OMNI-121 LTE700/2600

Omni antenna

- Frequency: 690-960/1710-2700 /2500-2700 MHz
- Connector: N F
- Gain: 6 dBi
- Polarization: linear vertical
- Dimensions: 555x50x50 mm
- Mounted: IP-67, L-mount included, good signal output 70km out at sea



ORDERING INFORMATION

118010102

MTX-Antenna Omni-121 GSM5+LTE700/2700 6dBi SMA M - LL195 -8m

MTX-Antenna PANEL LTE700/2600

Panel antenna

- Frequency: 690-960/1710-2170/2500-2700 MHz
- Connector: N F
- Gain: 8 dBi
- Polarization: vertical
- Dimensions: 210x180x43 mm



ORDERING INFORMATION

118009235

MTX-Antenna PANEL BROADBAND GSM5+LTE700/2600 7/8dBi N F

MTX-Antenna PANEL COMP LTE2600/2.4GHz

Panel antenna

- Frequency: 790-960/1710-2170/2400-2700 MHz
- Connectors: FME F, other
- Gain M1 - M2: 6/9/8 dBi
- Polarization: linear vertical
- Dimensions: 255x135x46 mm excluding bracket
- Other: supplied with mount bracket



ORDERING INFORMATION

600005006

MTX-Antenna PANEL COMP GSM5+LTE2600 2.4GHz 6/9/8dBi FME F - RG58 - 5m

MTX-Antenna Panel COMP GSM5+LTE2700

Panel antenna

- Frequency: 700/800/900/1800/2100/2600/2700 MHz
- Connector: SMA M
- Gain: 7/9 dBi



ORDERING INFORMATION

600005020

MTX-Antenna PANEL COMP GSM5+LTE2700 7/9dBi SMA M - LL195 - 5m

MTX-Antenna YAGI GSM5+LTE700/2700-3000

YAGI antenna

- Frequency: 700/800/900/1800/1900/2100/2600/2700-3000 MHz
- Connector: SMA M
- Gain: 12 dBi
- Dimensions: 1112x200x47 mm



ORDERING INFORMATION

118010113

MTX-Antenna YAGI GSM5+LTE700/2700-3000 12dBi SMA M - LL195 - 7m

MTX-Antenna Internal PCB Integra Left GSM5+LTE 790/2700

Internal-PCB antenna

- Frequency: 700/800/900/1800/2100/2600/2700 MHz
- Connector: SMD
- Gain: 791-960MHZ: 1.9dBi; 1710-2170MHZ: 3.0dBi; 2300-2400MHZ: 3.3dBi; 2500-2690MHZ: 3.5dBi
- Dimensions: 23.0 x 8.0 x 3.3 mm



ORDERING INFORMATION

118011045

MTX-Antenna Internal PCB INTEGRA Left GSM5+LTE790/2700 23X8X3.3 (SR4L049-L)

MTX-Antenna Internal Lucida PCB LTE 700/2600

Internal-PCB antenna

- Frequency: 698-798/824-960/1710-2170/2300-2400/2500-2690 MHz
- Gain: 1.5/1.5/1.5/2.0/2.0 dBi
- Dimensions: 35x8.5x3.2 mm



ORDERING INFORMATION

118011031	MTX-Antenna Internal PCB LUCIDA GSM5+LTE700/2700 35X8.5X3.2
-----------	---

MTX-Antenna Internal Adhesive OPNF0224 GSM5+LTE700/2700

Internal adhesive antenna

- Frequency: 698-960, 1710-2170, 2500-2700
- Connector: U.FL
- Gain: ~0.1, ~1.4, ~1.8 (dBi)
- Dimensions: 40.0 × 7.0 × 0.15



ORDERING INFORMATION

118016213	MTX-Antenna Internal Adhesive OPNF0224 GSM5+LTE700/2700 0.1/1.4/1.8dBi MMCX M R/A 1.37 - 100mm
118016204	MTX-Antenna Internal Adhesive OPNF0224 GSM5+LTE700/2700 0.1/1.4/1.8dBi U.FL 1.37 - 100mm

MTX-Antenna Internal Adhesive OPNF0624 GSM5+LTE700/2700

Internal adhesive antenna

- Frequency: 800/900/1800/1900/2100/2700 MHz
- Connector: U.FL
- Gain: 3.4 dBi
- Dimensions: 110.4x20.8mm



ORDERING INFORMATION

118016115	MTX-Antenna Internal Adhesive OPNF0624 GSM5+LTE700/2600 3.4dBi U.FL 1.37 - 100mm
118016241	MTX-Antenna Internal Adhesive OPNF0624 GSM5+LTE700/2600 1//3.4//2.5dBi MMCX M 1.37 - 100mm
118016209	MTX-Antenna Internal Adhesive Rigid OPNF0624 GSM5+LTE700/2700 0.3/1.5/2.8dBi MMCX M 1.37 - 100mm
118016196	MTX-Antenna Internal Adhesive Rigid OPNF0624 GSM5+LTE700/2700 0.3/1.5/2.8dBi U.FL1.37 - 150mm

MTX-Antenna Internal Adhesive OPNF0924 GSM5+LTE700/2700

Internal adhesive antenna

- Frequency: 700/800/900/1800/1900/2100/2600/2700 MHz
- Connector: U.FL
- Gain: 0-4.5 dBi
- Dimensions: 120x8.9x0.15mm



ORDERING INFORMATION

118016164

MTX-Antenna Internal Adhesive OPNF0924 GSM5+LTE700/2700 0-4.5dBi U.FL
1.37 - 100mm

MTX-Antenna Internal Adhesive OPN0424P GSM5+LTE700/2600

Internal adhesive antenna

- Frequency: 700/800/900/1800/1900/2100/2600 MHz
- Connector: U.FL
- Gain: 5.6 dBi
- Dimensions: 113x8.5x0.8 mm



ORDERING INFORMATION

118016116

MTX-Antenna Internal Adhesive OPN0424P GSM5+LTE700/2600 5.6dBi U.FL
1.37 - 100mm

MTX-Antenna Internal PCB GSM5+LTE700/2700

Internal PCB antenna

- Frequency: 698-824MHZ; 824-960MHZ; 1710-2170MHZ; 2300-2400MHZ; 2500-2690MHZ
- Connector: SMD
- Gain: 0.40dBi; 1.60dBi; 3.50dBi; 3.60dBi; 2.10dBi
- Dimensions: 28.0 x 8.0 x 3.3 (mm)



ORDERING INFORMATION

118011046

MTX-Antenna Internal PCB GSM5+LTE700/2700 1,5dBi 28X8X3mm (SR4L034-R)

MTX-Antenna Screwed CLO GSM5+LTE700/2600

Screwed antenna

- Frequency: 700/800/900/1800/2100/2600 MHz
- Connector: SMA M
- Gain: 3.7 dBi



ORDERING INFORMATION

118012426

MTX-Antenna Screwed CLO GSM5+LTE700/2600 3.7dBi SMA M - RG174 - 2m

4G/LTE MIMO ANTENNAS

MTX-Antenna Screwed CMO LTE700/2600 MIMO

Screwed antenna

- Frequency M1/M2: 690-800/800-960/1710-2170/2500-2700 MHzMHz
- Connectors: SMA M/other
- Gain M1/M2: 1/2.5/3.8/5 dBi - 1/2.5/3.7/5 dBi
- Dimensions: 102x33.5 mm



ORDERING INFORMATION

118012336	MTX-Antenna Screwed CMO GSM5+LTE700/2600 5dBi MIMO 2xSMA M - RG174 - 1m
118012364	MTX-Antenna Screwed CMO GSM5+LTE700/2600 5dBi MIMO 2xSMA M - RG174 - 2m
118012334	MTX-Antenna Screwed CMO GSM5+LTE700/2600 5dBi MIMO SMA M / FME F - RG174 - 2m
118012335	MTX-Antenna Screwed CMO GSM5+LTE700/2600 5dBi MIMO SMA M RP / FME F - RG174 - 2m

MTX-Antenna Screwed OPN LTE2600 MIMO

Screwed antenna

- Frequency: 850/900/1800/1900/2100/2600 MHz
- Connector: 2x SMA M
- Gain: 5 dBi
- Dimensions: 142.5x33.8 mm



ORDERING INFORMATION

118016051	MTX-Antenna Screwed OPN6524 GSM5+LTE2600 MIMO 5dBi 2xSMA M - RG174 - 3m
-----------	---

MTX-Antenna Screwed OPN LTE700/2600 MIMO

Screwed antenna

- Frequency: 699-960/1710-2170/2500-2690 MHz
- Connector: 2x SMA M
- Gain: 3 dBi
- Dimensions: 77.3x65.5 mm



ORDERING INFORMATION

118016099	MTX-Antenna Screwed OPN6A24 GSM5+LTE700/2600 3.4dBi MIMO 2xFME F - LMR100 - 5m
118016052	MTX-Antenna Screwed OPN6A24 GSM5+LTE700/2600 3.4dBi MIMO 2xSMA M - RG174 - 3m

MTX-Antenna Screwed GSM5+LTE700/2600

Screwed antenna

- Frequency: 700/800/900/1800/1900/2100/2600 MHz
- Connector: SMA M
- Gain: 0-4 dBi
- Dimensions: 100x26 mm



ORDERING INFORMATION

118009301	MTX-Antenna Screwed GSM5+LTE700/2600 0-4dBi MIMO 2xSMA M - RG174 - 5m
-----------	---

MTX-Antenna Screwed OPN7724 GSM5+LTE700/2600

Screwed antenna

- Frequency: 700/800/900/1800/1900/2100/2600 MHz
- Connector: SMA M
- Gain: 4 dBi
- Dimensions: Ø60x69 mm



ORDERING INFORMATION

118016157	MTX-Antenna screwed OPN7724 GSM5-LTE700/2600 4dBi MIMO 2xSMA M - LL100 - 2m
118016156	MTX-Antenna Magnetic OPN7724 GSM5+LTE700/2700 3.5dBi MIMO 2xSMA M - LL100 - 2m

MTX-Antenna Screwed OPN6024 GSM5+LTE700/2700

Screwed antenna

- Frequency: 700/800/900/1800/1900/2100/2600/2700 MHz
- Connector: SMA M
- Average gain: 4 dBi
- Dimensions: 80x74x14.7 mm



ORDERING INFORMATION

118016175	MTX-Antenna screwed OPN6024 GSM5+LTE700/2700 4dBi MIMO 2xSMA M - 2m
-----------	---

MTX-Antenna Screwed J03 GSM5+LTE700/2600 MIMO

Screwed antenna

- Frequency: 700/800/900/1800/1900/2100/2600 MHz
- Connector: SMA M
- Average gain: 2.5 dBi
- Dimensions: 46.6x16.3 mm



ORDERING INFORMATION

118006117	MTX-Antenna Screwed J03 GSM5+LTE700/2600 MIMO 2.5dBi 2xSMA M - RG174 - 3m
118006112	MTX-Antenna Screwed J03 GSM5+LTE700/2600 MIMO 2.5dBi 2xSMA M -Coax1.37 - 200mm

MTX-Antenna Screwed MIMO-3 433+GSM5+LTE690/2700+2.4/5GHz+GPS

Screwed antenna

- Frequency: 433/690/800/900/1800/1900/2100/2600/2700 MHz, 2.4/5 GHz
- Connector: SMA M
- Gain: 5.8-21 dBi
- Dimensions: 253x128x144 mm



ORDERING INFORMATION

118010118	MTX-Antenna Screwed MIMO-3 433MHz+GSM5+LTE690/2700+2.4/5GHz+ GPS SMA M - 2m
-----------	---

MTX-Antenna Screwed OPN7050 GSM5+LTE700/2700+2.4/5GHz+GPS-GLN

Screwed antenna

- Frequency: 700/800/900/1800/1900/2100/2600/2700 MHz, 2.4/5 GHz
- Connector: FME F, SMA M, SMA M RP
- Average gain: ~-3.3 - ~2.4 dBi
- Dimensions: Ø96x90 mm



ORDERING INFORMATION

118016100	MTX-Antenna Screwed OPN7050 (GSM5+LTE700/2700 MIMO FME F)+(GPS-GLN SMA M)+(2.4/5MHz x2 SMA M RP) 5m
118016129	MTX-Antenna Screwed OPN7050 (GSM5+LTE700/2700 MIMO SMA M)+(GPS-GLN FME F)+(2.4/5MHz x2 SMA M RP) 3m

MTX-Antenna Screwed OPN7741 GSM+LTE700/2700 MIMO+GPS-GLN

Screwed antenna

- Frequency: 700/800/900/1800/1900/2100/2600/2700 MHz
- Connector: U.FL
- Average gain: -4.3~-2.6 dBi
- Dimensions: 69x60 mm



ORDERING INFORMATION

118016171	MTX-Antenna Screwed OPN7741 (GSM5+LTE700/2700 MIMO U.FL)+(GPS-GLN U.FL) RG178 -150mm
118016167	MTX-Antenna Screwed OPN7741 (GSM5+LTE700/2700 MIMO U.FL)+(GPS-GLN U.FL) RG178 -200mm

MTX-Antenna Adhesive Blade FLMB GSM5+LTE700/2700

Adhesive Blade antenna

- Frequency: 700/800/900/1800/1900/2100/2600/2700 MHz
- Connector: SMA M
- Gain: 2.5 dBi
- Dimensions: 181x80 mm



ORDERING INFORMATION

118012371	MTX-Antenna Adhesive Blade FLMB GSM5+LTE700/2700 2.5dBi MIMO 2xSMA M - RG174 - 50mm
-----------	---

MTX-Antenna Magnetic OPN6024 GSM5+LTE700/2700

Magnetic antenna

- Frequency: 700/800/900/1800/1900/2100/2600/2700 MHz
- Connector: SMA M
- Gain: 4 dBi
- Dimensions: 80x76x13 mm



ORDERING INFORMATION

118016146	MTX-Antenna Magnetic OPN6024 GSM5+LTE700/2700 4dBi MIMO 2xSMA M - D302 - 3m
-----------	---

MTX-Antenna Magnetic OPN7741 GSM5+LTE700/2700+GPS

Magnetic antenna

- Frequency: 700/800/900/1800/1900/2100/2600/2700 MHz
- Connector: Fakra D Jack-F, Fakra C Jack-F
- Gain: ~1.8, ~3.1, ~2.9 dBi
- Dimensions: 54x68.2 mm



ORDERING INFORMATION

118016173

MTX-Antenna Magnetic OPN7741 (GSM5+LTE700/2700 MIMO Fakra D Jack-F)+(GPS Fakra C Jack-F)-LL100-3m

MTX-Antenna Omni Marine-402 GSM5+LTE452/2700 MIMO

Omni Marine antenna

- Frequency: 452/800/900/1800/1900/2100/2600/2700 MHz
- Connector: SMA M
- Gain: 6.2 dBi
- Dimensions: 704x147x100 mm



ORDERING INFORMATION

118010120

MTX-Antenna Omni Marine-402 GSM5+LTE452/2700 MIMO 6.2dBi 2x SMA M - LL195 - 2m

MTX-Antenna PANEL LPM LTE2600 MIMO

Panel antenna

- Frequency M1-M2: 790-960/1710-2170/2500-2700 MHz
- Connectors: N F
- Gain M1 – M2: 9/8/8 dBi
- Polarization: dual polarised, 1 vertical, 1 horizontal
- Dimensions: 200x200x40 mm excluding bracket
- Other: supplied with mount bracket for wall or pole



ORDERING INFORMATION

118012212

MTX-Antenna PANEL LPM GSM5+LTE2600 MIMO N F + N F

MTX-Antenna PANEL XPOL LTE2700

Panel antenna

- Frequency: 790-960/1710-2700 MHz
- Connector: SMA M
- Gain: 4 dBi
- Polarization: +45° and -45°
- Dimensions: 215x135x85 mm
- Mounq: includes wall/pole/window mounting



ORDERING INFORMATION

118010104

MTX-Antenna PANEL XPOL1 GSM5+LTE2700 MIMO 2x SMA M - LL195 - 5m

MTX-Antenna PANEL COMP GSM5+LTE2700

Panel antenna

- Frequency:
700/800/900/1800/2100/2600/2700 MHz
- Connector: SMA M
- Gain: 5/8 dBi



ORDERING INFORMATION

600005025

MTX-Antenna PANEL COMP GSM5+LTE2700 5/8dBi MIMO 2xSMA M

5G ANTENNAS

MTX-Antenna Screwed LS GSM5+LTE700/2600+5G

Screwed antenna

- Frequency: 700/800/900/1800/2100/2600/3500 MHz
- Connector: SMA M
- Gain: 4 dBi



ORDERING INFORMATION

118009356	MTX-Antenna Screwed LS GSM5+LTE700/2600+5G 4dBi SMA M - RG174 -2m
-----------	---

MTX-Antenna Screwed CLO GSM5+LTE700/2600+5G3500

Screwed antenna

- Frequency: 700/800/900/1800/1900/2100/2600/3500 MHz
- Connector: SMA M R/A
- Gain: ? dBi
- Dimensions: ? mm

ORDERING INFORMATION

118012409	MTX-Antenna Screwed CLO GSM5+LTE700/2600+5G3500 SMA M R/A - RG174 -2m
-----------	---

MTX-Antenna Screwed PUCK GSM5+LTE700/2600+5G

Screwed antenna

- Frequency: 700/800/900/1800/1900/2100/2600/3500 MHz
- Connector: SMA M
- Gain: 6 dBi
- Dimensions: 100x36 mm



ORDERING INFORMATION

118010123	MTX-Antenna Screwed PUCK GSM5+LTE700/2600+5G 6dBi SMA M - RG174 -2m
118010134	MTX-Antenna Screwed PUCK White GSM5+LTE+5G 617/4200 6dBi SMA M - RG174 -2m

MTX-Antenna STUB OMNI-85 GSM5+LTE/5G

Stub antenna

- Frequency: 617 – 960 MHz 1427 – 1517 MHz
1710 – 2700 MHz 3400 – 3800 MHz
- Connector: SMA M
- Gain: 0 dBi @ 617 - 960 MHz 1.2 dBi @ 1427 -
1517 MHz 3.5 dBi @ 1710 – 2700 MHz 2.5 dBi @
3400 - 3800 MHz
- Dimensions: 209 mm x 31 mm x Ø13 mm



ORDERING INFORMATION

118010133

MTX-Antenna STUB OMNI-85 GSM5+LTE/5G 617-3800 3.5dBi SMA M

MTX-Antenna Adhesive BLADE GSM5+LTE600/2700+5G

Adhesive antenna

- Frequency: 600/800/900/1800/1900/2100/
2600/2700/3500 MHz
- Connector: SMA M
- Gain: 2.5 dBi
- Dimensions: 47.7x22.8 mm



ORDERING INFORMATION

118009320

MTX-Antenna Adhesive BLADE GSM5+LTE600/2700+5G 2.5dBi SMA M - RG174 -
3m

5G MIMO ANTENNAS

MTX-Antenna Screwed LPO GSM5+LTE700/2600+5G

Screwed antenna

- Frequency: 690-790/790-960/1710-2170/ 2500-2690 / 3400-3800 MHz
- Connector: 4 x SMA-Male
- Gain: 2.67 / 3.95 / 7.35 / 4.75 6.61 dBi
- Dimensions: 140 x 80mm (hxd excluding bracket)



ORDERING INFORMATION

118012422	MTX-Antenna Screwed LPO GSM5+LTE700/2600+5G 7dBi MIMO 4x SMA M - RF240 - 5m w/ bracket
-----------	--

MTX-Antenna Screwed OPN7B83 GSM5+LTE600/2700+5G

Screwed antenna

- Frequency: Connection 1: 617-960, 1427-2690, 3300-5000, 5150-5925
Connection 2: 617-960, 1427-2690, 3300-5000, 5150-5925
Connection 3: 617-960, 1427-2690, 3300-5000, 5150-5925
Connection 4: 617-960, 1427-2690, 3300-5000, 5150-5925
- Connector: SMA M
- Gain: Connection 1: ~1.3, ~3.4, ~4.8, ~4.0;
Connection 2: ~1.2, ~3.5, ~4.6, ~3.2; Connection 3: ~1.3, ~3.8, ~4.5, ~4.6, ~1.8:1; Connection 4: ~1.7, ~3.4, ~4.6, ~3.9; (dBi)
- Dimensions: Ø 96 x H 133



ORDERING INFORMATION

118016224	MTX-Antenna Screwed OPN7B83 GSM5+LTE600/2700+5G 4.5dBi MIMO 4x SMA M - LL195 - 3m
-----------	---

MTX-Antenna Screwed LPMM4 LTE+5G

Screwed antenna

- Frequency: 800/900/1800/2100/2600/3500 MHz
- Connector: SMA M
- Gain: 9 dBi



ORDERING INFORMATION

118010305	MTX-Antenna Screwed LPMM4 LTE+5G 9dBi 4x4MIMO SMA M - RG174 - 300mm
-----------	---

MTX-Antenna Screwed PUCK GSM5+LTE700/2600+5G+2.4/5GHz+GPS

Screwed antenna

- Frequency: 700/800/900/1800/1900/2100/2600/3500 MHz, 2.4/5 GHz
- Connector: SMA M
- Gain: 6 dBi
- Dimensions: 100x36 mm



ORDERING INFORMATION

118010119	MTX-Antenna Screwed PUCK (GSM5+LTE700/2600+5G MIMO)(2.4/5MHz MIMO) (GPS-Glonass) 5xSMA M -2m
118010122	MTX-Antenna Screwed PUCK (GSM5+LTE700/2600+5G 6dBi MIMO)(GPS-Glonass) 3xSMA M -2m
118010130	MTX-Antenna Screwed PUCK (GSM5+LTE700/2600+5G MIMO)6dBi(2.4/5GHz) 3xSMA M -2m
118010117	MTX-Antenna Screwed PUCK GSM5+LTE700/2600+5G 6dBi MIMO 2xSMA M - RG174 - 2m

MTX-Antenna OMNI XPOL1 GSM5+LTE700/2700+5G

Omni antenna

- Frequency: 700/800/900/1800/1900/2100/2600/2700/3500 MHz
- Connector: SMA M
- Gain: 3 dBi
- Dimensions: 247x157x88 mm



ORDERING INFORMATION

118010129	MTX-Antenna OMNI XPOL1 GSM5+LTE700/2700+5G 3dBi MIMO 2xSMA M - LL195 -5m
118012424	MTX-Antenna Omni GSM5+LTE+5G 617/3800MHz MIMO 2xSMA M + Cables RF195 - 10m
118012425	MTX-Antenna Omni GSM5+LTE+5G 617/3800MHz MIMO 2xSMA M + Pigtaills - 150mm

MTX-Antenna OMNI DWMM4 LTE+5G

Omni antenna

- Frequency: 800/900/1800/2100/2600/3500 MHz
- Connector: SMA M
- Gain: 3.5/7 dBi



ORDERING INFORMATION

118010303

MTX-Antenna OMNI DWMM4 LTE+5G 3,5-7dBi 4x4 MIMO 4 SMA M CS32 - 5m

MTX-Antenna PANEL XPOL2 GSM5+LTE700/2700+5G₆

Panel antenna

- Frequency: 700/800/900/1800/1900/2100/2600/2700/3500 MHz
- Connector: SMA M
- Gain: 9 dBi
- Dimensions: 290x265x155 mm



ORDERING INFORMATION

118010124

MTX-Antenna PANEL XPOL2 GSM5+LTE700/2700+5G 9dBi MIMO 2xSMA M - LL195 - 5m

MTX-Antenna PANEL XPOL2 GSM5+LTE690/3800+5G₆

Panel antenna

- Frequency: 698-960/1710-2700/3400-3800 MHz
- Connector: SMA M
- Gain: 9 dBi @ 698-960 MHz/10 dBi @ 1710-2700 MHz/11 dBi @ 3400-3800 MHz



ORDERING INFORMATION

118010135

MTX-Antenna PANEL XPOL2 GSM5+LTE690/3800+5G 11dBi MIMO 2xSMA M - LL195 - 10m

118010139

MTX-Antenna PANEL XPOL2 GSM5+LTE690/3800+5G 11dBi MIMO 2xN F

MTX-Antenna PANEL WMM4 LTE+5G

Panel antenna

- Frequency: 800/900/1800/2100/2600/3500 MHz
- Connector: SMA M
- Gain: 9 dBi



ORDERING INFORMATION

118010304	MTX-Antenna PANEL WMM4 LTE+5G 9dBi 4x4MIMO 4 SMA M CS32 - 5m
-----------	--

MTX-Antenna PANEL XPOL-24 GSM5+LTE+5G 3400/4200

Panel antenna

- Frequency: 617-4200 MHz
- Connector: SMA M
- Gain: 11 dBi
- Polarization: cross-polarisation
- Dimensions: 443,4x289,5x110,1 mm



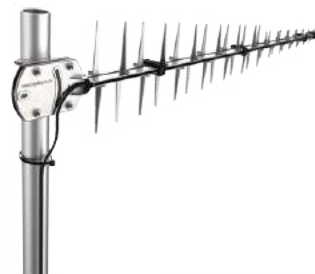
ORDERING INFORMATION

118010138	MTX-Antenna PANEL XPOL-24 GSM5+LTE+5G3400/4200 11dBi 4x4 MIMO SMA M - LL195 - 5m
-----------	--

MTX-Antenna YAGI LPDA GSM5+LTE+5G 690-3800

Yagi antenna

- Frequency: 698 – 960 MHz 1427-1517 MHz 1710 – 2700 MHz 3400 – 3800 MHz
- Connector: SMA M
- Gain: 10.8 dBi @ 698-960 MHz 10 dBi @ 1427-1517 MHz 11 dBi @ 1710-2700 MHz 2.3 dBi @ 3400-3800 MHz
- Dimensions: 1112 x 200 x 47 mm



ORDERING INFORMATION

118010141	MTX-Antenna YAGI LPDA GSM5+LTE+5G 690-3800 11dBi MIMO 2xSMA M - LL195 - 7m
-----------	--

MTX-Antenna Omni Fiberglass YG GSM5+LTE700/2700+5G

Omni Fiberglass antenna

- Frequency: 700/800/900/1800/2100/2600/2700/3500 MHz
- Connector: SMA M
- Gain: 3 dBi



ORDERING INFORMATION

118009350

MTX-Antenna Omni Fiberglass YG GSM5+LTE700/2700+5G 3dBi SMA M - LL195 - 15m

WIFI 2.4/5 GHz ANTENNAS

MTX-Antenna STUBBY BT 2.4GHz

Stub antenna

- Frequency: 2.4-2.5 GHz
- Connector: SMA M
- Gain: 0 dBi
- Dimensions: 36x17.5 mm (max.)



ORDERING INFORMATION

118012018	MTX-Antenna STUBBY BT 2.4GHz SMA M
118012019	MTX-Antenna STUBBY BT 2.4GHz SMA M R/A
118012095	MTX-Antenna STUBBY BT 2.4GHz SMA M RP
118012106	MTX-Antenna STUBBY BT 2.4GHz SMA M RP R/A

MTX-Antenna STUBDUCK SW 2.4/5.8 GHz

Stub antenna

- Frequency: 2.4-5.8 GHz
- Connector: SMA M RP
- Gain: 3/5 dBi
- Dimensions: 115X15X18 mm



ORDERING INFORMATION

118009135	MTX-Antenna STUBDUCKSW 2.4/5.8GHz 3/5dBi SMA M RP
118009055	MTX-Antenna STUBDUCKSW 2.4/5.8GHz 3/5dbi SMA M RP+MagneticBase SMA M RP-RG174 - 2m
118009280	MTX-Antenna STUBDUCKSW 2.4/5.8GHz 3/5dbi SMA M RP + MagneticBase SMA M - RG174 - 2m

MTX-Antenna STUBFLATSW BTR 2.4/5GHz

Stub antenna

- Frequency: 2400-2500/4900-6000 MHz
- Connector: SMA M
- Gain: 2 dBi
- Dimensions 99.5x11 mm (max.)



ORDERING INFORMATION

118012230	MTX-Antenna STUBFLATSW 2.4/5GHz 2dBi SMA M
118012241	MTX-Antenna STUBFLATSW 2.4/5GHz 2dBi SMA M RP

MTX Antenna STUBSW 2.4GHz 2dBi

Stub antenna

- Frequency: 2.4 GHz
- Connector: SMA M/SMA M RP
- Gain: 2 dBi
- Dimensions: 108x9.3 mm



ORDERING INFORMATION

118010309	MTX-Antenna STUBSW PWB 2.4/5GHz 3/5dbi SMA M RP (PWB-24-58-RSMARV)
118009256	MTX-Antenna STUBSW 2.4GHz 2dbi SMA M
118009250	MTX-Antenna STUBSW 2.4GHz 2dbi SMA M RP

MTX Antenna STUBSW 2.4GHz 5dBi

Stub antenna

- Frequency: 2.4 GHz
- Connector: SMA M RP
- Gain: 5 dBi
- Dimensions: 190x12.7 mm



ORDERING INFORMATION

118009238	MTX-Antenna STUBSW 2.4GHz 5dbi SMA M RP
118009239	MTX-Antenna STUBSW 2.4GHz 5dbi SMA M RP + MagneticBase SMA M RP - RG174 - 2m

MTX-Antenna STUBSW 2.4GHz 7dBi + MagneticBase

Stub antenna

- Frequency: 2.4 GHz
- Connector: SMA M RP
- Gain: 7 dBi
- Dimensions: 245 mm
- Base connector: SMA F RP
- Base cable: SMA M RP - RG174U -2m



ORDERING INFORMATION

118009094	MTX-Antenna STUBSW 2.4GHz 7dbi SMA M RP + MagneticBase SMA M RP - RG174 - 2m
-----------	--

MTX-Antenna STUBSW 2.4GHz 9dBi + MagneticBase

Stub antenna

- Frequency: 2.4 GHz
- Connector: SMA M RP
- Gain: 9 dBi
- Dimensions: 380 mm
- Base connector: SMA F RP
- Base cable: SMA M RP - RG174U -3m



ORDERING INFORMATION

118009276	MTX-Antenna STUBSW 2.4GHz 9dbi SMA M RP
118009095	MTX-Antenna STUBSW 2.4GHz 9dbi SMA M RP + MagneticBase SMA M RP - RG174 - 2m

MTX-Antenna STUBSW BKR 2.4GHz 2dBi

Stub antenna

- Frequency: 2.4-2.5 GHz
- Connector: SMA M RP
- Gain: 2 dBi
- Dimensions: 139x13 mm (max.)



ORDERING INFORMATION

118012132	MTX-Antenna STUBSW BKR2400 2.4GHz 2dbi SMA M RP
-----------	---

MTX-Antenna STUBSW 2.4/5GHz

Stub antenna

- Frequency: 2.4/5 GHz
- Connector: SMA M RP
- Gain: 1.4/3.2 dBi
- Dimensions: 139x13 mm (max.)



ORDERING INFORMATION

118016096	MTX-Antenna STUBSW OPNW035 2.4/5GHz 1.4/3.2dbi SMA M RP
118016195	MTX-Antenna Internal OPNF0302 2.4/5.0/6.0GHz 3.2/5.0/5.2dBi MIMO 2xU. FL1.37 - 150mm

MTX-Antenna STUB Screwed WCO 2.4GHz

Stub antenna

- Frequency: 2.4 GHz
- Connector: SMA M RP - N M
- Gain: 2.5 dBi
- Dimensions: 116 mm



ORDERING INFORMATION

118012367	MTX-Antenna STUB Screwed WCO 2.4GHz 2.5dbi N F+ SMA M RP - N M - RF195 - 5m
118009270	MTX-Antenna STUBSW Screwed 2.4GHz 2dBi - Cable U.FL 1.13 - 200mm

MTX-Antenna Magnetic STUB L10 2.4GHz 2dBi

Magnetic antenna

- Frequency: 2.4-2.5 GHz
- Connector: SMA M RP
- Gain: 2.0 dBi
- Dimensions: 100x34 mm



ORDERING INFORMATION

118007023	MTX-Antenna Magnetic STUB L10 2.4GHz 2dbi SMA M - RG174 - 2m
118007031	MTX-Antenna Magnetic STUB L10 2.4GHz 2dbi SMA M RP - RG174 - 3m
118007041	MTX-Antenna Magnetic STUB L10 2.4GHz 2dbi SMA M RP R/A - RG174 - 3m

MTX-Antenna Magnetic STUB OPN3702 L7 2.4GHz

Magnetic antenna

- Frequency: 2.4 GHz
- Connector: SMA M RP R/A
- Gain: 2 dBi
- Dimensions: Ø31x71.5 mm



ORDERING INFORMATION

118016152	MTX-Antenna Magnetic STUB OPN3702 L7 2.4GHz 2dbi SMA M RP R/A - RG174 - 3m
-----------	--

MTX-Antenna Screwed CM2 MIMO 2.4/5GHz

Screwed antenna

- Frequency: 2.4/5 GHz
- Connector: SMA F
- Gain: 4 dBi to 9 dBi
- Dimensions: 12 x 12 x 3 cm



ORDERING INFORMATION

118010307	MTX-Antenna Screwed CM2 Mimo 2.4/5GHz x 2 SMA F- CS32 - 300mm
118010301	MTX-Antenna Screwed CM2 Mimo 2.4/5GHz x 2 SMA M RP - CS32 - 2m

MTX-Antenna Screwed CPW 2.4/5GHz

Screwed antenna

- Frequency: 2.4-2.5/4.9-5.8 GHz
- Connector: SMA M
- Gain: 2/3 dBi
- Dimensions: 102x33.5 mm



ORDERING INFORMATION

118012333	MTX-Antenna Screwed CPW 2.4/5GHz 2/3dbi SMA M - RG174 - 5m
118012130	MTX-Antenna Screwed CPW 2.4/5GHz 2/3dbi SMA M RP - RG174 - 2m

MTX-Antenna Screwed Button WiFi6 2.4/ 5.5/5.9 GHz

Screwed antenna

- Frequency:
- Connector: SMA M RP
- Gain:
- Dimensions:

ORDERING INFORMATION

118012427	MTX-Antenna Screwed Button WiFi6 2.4/ 5.5/5.9 GHz SMA M RP - RG174 - 1m
-----------	---

MTX-Antenna Screwed CPW 2.4/5GHz MIMO

Screwed antenna

- Frequency: 2.4-2.5/4.9-5.8 GHz
- Connector: SMA M
- Gain: 2/3 dBi
- Dimensions: 102 x 33.5mm



ORDERING INFORMATION

118012540	MTX-Antenna Screwed CPW Mimo 2.4/5GHz 2xSMA M RP - RG174 - 1m
118012372	MTX-Antenna Screwed CPW Mimo 2.4/5GHz 2xSMA M RP - RG174 - 2m
118012373	MTX-Antenna Screwed CPW Mimo 2.4/5GHz 2xSMA M RP R/A - RG174 - 2m

MTX-Antenna Screwed ESFERA 2.4/5.2GHz

Screwed antenna

- Frequency: 2.4/5.2 GHz
- Connector: SMA M
- Gain: 2/3 dBi
- Dimensions: 53x23 mm



ORDERING INFORMATION

118009161	MTX-Antenna Screwed ESFERA 2.4/5.2GHz SMA M RP - RG174 - 2m
-----------	---

MTX-Antenna Screwed M66 2.4GHz

Screwed antenna

- Frequency: 2.4 GHz
- Connector: SMA M
- Gain: 0 dBi
- Dimensions: 53x75 mm



ORDERING INFORMATION

118009082	MTX-Antenna Screwed M66 2.4GHz SMA F RP - RG316 - 5m
118009124	MTX-Antenna Screwed M66 2.4GHz SMA M - RG316 - 5m
118009084	MTX-Antenna Screwed M66 2.4GHz SMA M RP - RG316 - 5m

MTX-Antenna Screwed OPN 2.4/5GHz

Screwed antenna

- Frequency: 2.4/5.1-5.9 GHz
- Connector: SMA M RP
- Gain: 5.0 dBi
- Dimensions: 73x15.9 mm
- Protección: IP67



ORDERING INFORMATION

118016084	MTX-Antenna Screwed OPN662 2.4/5GHz 5dbi SMA M RP - R174 - 5m
118016090	MTX-Antenna Screwed OPN662 2.4/5GHz 5dbi SMA M RP - R174 - 1,5m

MTX-Antenna Screwed OPN 2.4GHz Antenna

Screwed antenna

- Frequency: 2.4GHz
- Connector: SMA M
- Gain: 2.5 dBi
- Dimensions: 60x15.5 mm
- Protección: IP67



ORDERING INFORMATION

118016057	MTX-Antenna Screwed OPN7402 2.4GHz 2.5dBi SMA M - R174 - 5m
-----------	---

MTX-Antenna Screwed ROOFBALL 2.4GHz

Screwed antenna

- Frequency: 2.4 GHz
- Connector: SMA M
- Gain: 0 dBi
- Dimensions: 53x30x30 mm



ORDERING INFORMATION

118009101	MTX-Antenna Screwed ROOFBALL 2.4GHz SMA M - RG174 - 4m
118009155	MTX-Antenna Screwed ROOFBALL 2.4GHz SMA M RP - RG174 - 4m

MTX-Antenna Screwed Stub OPN 2.4GHz

Screwed antenna

- Frequency: 2.4 GHz
- Connector: SMA M
- Gain: 5 dBi
- Dimensions: 184X16 mm



ORDERING INFORMATION

118016086	MTX-Antenna STUB Screwed Wall OPN230 2.4/5GHz 3.3/5.8dbi SMA M RP - LMR195 - 5m
-----------	---

MTX-Antenna Screwed OPN6A02Ba Mimo 2.4/5GHz

Screwed antenna

- Frequency: 2.4/5 GHz
- Connector: SMA M RP R/A
- Gain: ~2.6, ~4.4 dBi
- Dimensions: Ø77.3×65.5 mm



ORDERING INFORMATION

118016108	MTX-Antenna Screwed OPN6A02Ba Mimo 2.4/5GHz 2xSMA M RP R/A- LMR100 - 2m
-----------	---

MTX-Antenna Screwed OPN662 2.4/5GHz

Screwed antenna

- Frequency: 2.4/5 GHz
- Connector: SMA M RP
- Gain: 5 dBi
- Dimensions: Ø77.3×15 mm



ORDERING INFORMATION

118016136	MTX-Antenna Screwed OPN662 2.4/5GHz 5dbi SMA M RP - R174 - 1m
-----------	---

WIFI 2.4/5 GHz ANTENNAS

MTX-Antenna Screwed ROOFBALL 2.4GHz

Screwed antenna

- Frequency: 2.4 GHz
- Connector: U.FL
- Gain: 2 dBi
- Dimensions: 30x21 mm



ORDERING INFORMATION

118009310

MTX-Antenna Screwed ROOFBALL 2.4GHz U.FL 1.37 - 50mm

MTX-Antenna Magnetic OPN6302 2.4/5GHz

Magnetic antenna

- Frequency: 2.4/5 GHz
- Connector: SMA M
- Gain: 2/5 dBi
- Dimensions: Ø52.5×14.3 mm



ORDERING INFORMATION

118016082

MTX-Antenna Magnetic OPN6302 2.4/5GHz 2/5dBi SMA M - RG174 - 2m

MTX-Antenna Adhesive BLADE 2.4GHz

Adhesive antenna

- Frequency: 2.4 GHz
- Connector: SMA M
- Gain: 0 dBi
- Dimensions: 115X22 mm



ORDERING INFORMATION

118007022

MTX-Antenna Adhesive BLADE 2.4GHz FAKRA I Jack-F - RG174 - 2m

MTX-Antenna Adhesive OPN6002 Mimo 2.4/5GHz

Adhesive antenna

- Frequency: 2.4/5 GHz
- Connector: SMA M RP
- Gain: -2.1~-3.9 dBi
- Dimensions: 80x76x16 mm



ORDERING INFORMATION

118016130	MTX-Antenna Adhesive OPN6002 Mimo 2.4/5GHz 2xSMA M RP - LMR100 - 3m
-----------	---

MTX-Antenna Adhesive BLADEMID 2.4/5GHz

Adhesive antenna

- Frequency: 2.4/5 GHz
- Connector: SMA M, SMA M RP
- Gain: 2.5 dBi
- Dimensions: 108x18 mm



ORDERING INFORMATION

118009279	MTX-Antenna Adhesive BLADEMID 2.4/5GHz SMA M - RG174 - 3m
118009324	MTX-Antenna Adhesive BLADEMID 2.4/5GHz SMA M RP - RG174 - 1m

MTX-Antenna Adhesive OPN6302 2.4/5GHz

Adhesive antenna

- Frequency: 2.4/5 GHz
- Connector: SMA M
- Gain: 2/5 dBi
- Dimensions: Ø52.5x14.3 mm



ORDERING INFORMATION

118016083	MTX-Antenna Adhesive OPN6302 2.4/5GHz 2/5dBi SMA M - RG174 - 300mm
-----------	--

MTX-Antenna BLADEMID 2.4/5GHz

Adhesive antenna

- Frequency: 2.4/5 GHz
- Connector: SMA M RP
- Gain: 2.5 dBi
- Dimensions: 110X18 mm



ORDERING INFORMATION

118009232

MTX-Antenna Adhesive BLADEMID 2.4/5GHz SMA M RP - RG174 - 3m

MTX-Antenna FIBERGLASS 2.4GHz

Omni FIBERGLASS antenna

- Frequency: 2.4-2.5 GHz
- Connector: N F
- Gain: 15 dBi
- Dimensions: 1485x68 mm



ORDERING INFORMATION

118009165

MTX-Antenna Omni FIBERGLASS 2.4GHz 15dbi N F

MTX-Antenna PANEL 2.4GHz 15 dBi

Panel antenna

- Frequency: 2.4-2.5 GHz
- Connector: N F
- Gain: 15 dBi
- Dimensions: 230x230x20 mm



ORDERING INFORMATION

118009265

MTX-Antenna PANEL 2.4GHz N F 15 dBi

MTX-Antenna PANEL 2.4GHz 13 dBi

Panel antenna

- Frequency: 2.4-2.5 GHz
- Connector: N F
- Gain: 13 dBi
- Dimensions: 170x145x22 mm



ORDERING INFORMATION

118009087	MTX-Antenna PANEL 2.4GHz N F 13 dBi
118009163	MTX-Antenna PANEL 2.4GHz N F 13 dBi [Black]

MTX-Antenna PANEL COMP GSM5+LTE2600 2.4GHz

Panel antenna

- Frequency: 790-960/1710-2170/2400-2700 MHz
- Connectors: FME F, other
- Gain M1 – M2: 6/9/8 dBi
- Polarization: linear vertical
- Dimensions: 255x135x46 mm excluding bracket
- Other: supplied with mount bracket



ORDERING INFORMATION

600005006	MTX-Antenna PANEL COMP GSM5+LTE2600 2.4GHz FME F - 5m
-----------	---

MTX-Antenna PANEL OPN 2.4GHz

Panel antenna

- Frequency: 2.4GHz
- Connector: N F
- Gain: 12 dBi
- Dimensions: 104x104x90 mm



ORDERING INFORMATION

118016003	MTX-Antenna PANEL OPNWIFI12 2.4GHz N F
-----------	--

MTX-Antenna PANEL 2.4/5GHz

Panel antenna

- Frequency: 2.4/5GHz
- Connector: SMA F
- Gain: 18 dBi
- Dimensions: 1473.5x26 mm



ORDERING INFORMATION

118010128

MTX-Antenna PANEL 2.4/5GHz 18dBi SMA F

MTX-Antenna MINES - TUNNEL HELI-3 2.4/2.5GHz

TUNNEL antenna

- Frequency: 2.4/2.5GHz
- Connectors: N F
- Gain: 17.5 dBi
- Polarization: circular
- Dimensions: 1050x150x120 mm



ORDERING INFORMATION

118010107

MTX-Antenna TUNNEL HELI-3 2.4/2.5GHz 17.5dBi N F

MTX-Antenna TUNNEL HELI-4 2.4/2.5GHz

TUNNEL antenna

- Frequency: 2.4/2.5GHz
- Connectors: N F
- Gain: 15 dBi
- Polarization: circular
- Dimensions: 405x110x130 mm



ORDERING INFORMATION

118010108

MTX-Antenna TUNNEL HELI-4 2.4/2.5GHz 15dBi N F

WIFI 2.4/5 GHz ANTENNAS

MTX-Antenna TUNNEL HELI-8 2.4/2.5GHz

TUNNEL bidirectional antenna

- Frequency: 2.4/2.5GHz
- Connectors: N F
- Gain: 14 dBi
- Dimensions: 2050x104x140 mm



ORDERING INFORMATION

118010109	MTX-Antenna TUNNEL Bidireccional HELI-8 2.4/2.5GHz 14dBi N F
-----------	--

MTX-Antenna TUNNEL HELI-19 2.4/2.5GHz

TUNNEL antenna

- Frequency: 2.4/2.5GHz
- Connectors: N F
- Gain: 9/11 dBi
- Dimensions: 603x142x114 mm



ORDERING INFORMATION

118010121	MTX-Antenna TUNNEL HELI-19 2.4/5GHz 9/11dBi N F
-----------	---

MTX-Antenna Internal OPN 2.4/5.2GHz

Internal antenna

- Frequency: 2.4/5.2 GHz
- Connector: U.FL/other
- Gain: 1,2/0.8 dBi
- Dimensions: 39.6x8.4x0.1 mm



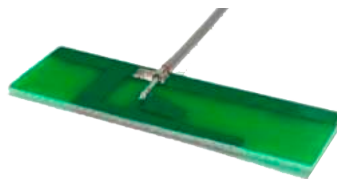
ORDERING INFORMATION

118016106	MTX-Antenna Internal OPNF0102 2.4/5GHz Bottom U.FL - 150mm
118016064	MTX-Antenna Internal OPNF0102 2.4/5GHz U.FL - 150 mm
118016103	MTX-Antenna Internal OPNF0102P 2.4/5GHz U.FL - 580 mm
118016065	MTX-Antenna Internal OPNMA505c 2.4/5GHz U.FL - 150 mm

MTX-Antenna Internal 2.4/5.2GHz

Internal antenna

- Frequency: 2.4/5.2 GHz
- Connector: U.FL/other
- Gain: 3 dBi
- Dimensions: 13.3x42x1.75 mm



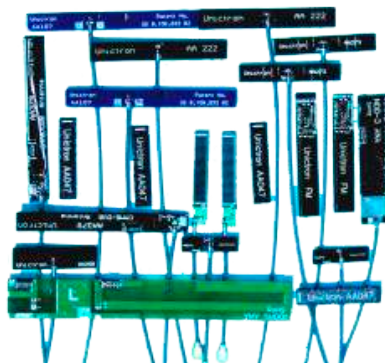
ORDERING INFORMATION

118016065	MTX-Antenna Internal OPNMA505c 2.4/5GHz U.FL - 150 mm
-----------	---

MTX-Antenna Internal Ceramic 2.4/5GHz

Internal antenna

- Frequency: 2.4/5 GHz
- Connector: U.FL/other



ORDERING INFORMATION

118017019	MTX-Antenna Internal Ceramic CHIP 2.4GHz 2.5dbi 3.2x1.6x0.5mm
118017020	MTX-Antenna Internal Ceramic CHIP 2.4GHz 2.6dbi 3.2x1.6x0.5mm
118017014	MTX-Antenna Internal PCB 2.4/5GHz 40x6x0.5mm U.FL - 100mm
118017013	MTX-Antenna Internal PCB 2.4GHz 50x5x0.5mm U.FL - 100mm

MTX-Antenna Internal PCB MUTICA 2.4/5GHz

Internal PCB antenna

- Frequency: 2.4/5 GHz
- Connector: SMD Mounting
- Gain: 0.5/2.5 dBi
- Dimensions: 11.3x5.0x0.8 mm



ORDERING INFORMATION

118011032	MTX-Antenna Internal PCB MUTICA 2.4-5 GHz 11.3x5x0.8mm (SR42W001)
-----------	---

MTX-Antenna YAGI 2.4GH

Yagi antenna

- Frequency: 2.4 GHz
- Connector: SMA M RP
- Gain: 7 dBi
- Dimensions: 300 mm length



ORDERING INFORMATION

118007001

MTX-Antenna YAGI 2.4GHz 7dBi SMA M RP - LMR195 - 6m

WIFI MIMO ANTENNAS

MTX-Antenna Screwed OPN6A02Ba Mimo 2.4/5GHz

Screwed antenna

- Frequency: 800/900/1800/2100/2600/3500 MHz, 2.4/5 GHz
- Connector: SMA M RP R/A
- Gain: ~2.6, ~4.4 dBi
- Dimensions: Ø77.3×65.5 mm



ORDERING INFORMATION

118016108

MTX-Antenna Screwed OPN6A02Ba Mimo 2.4/5GHz 2xSMA M RP R/A- LMR100 - 2m

MTX-Antenna Adhesive OPN6002 Mimo 2.4/5GHz

Adhesive antenna

- Frequency: 800/900/1800/2100/2600/3500 MHz, 2.4/5 GHz
- Connector: SMA M RP
- Gain: -2.1~-3.9 dBi
- Dimensions: 80x76x16 mm



ORDERING INFORMATION

118016130

MTX-Antenna Adhesive OPN6002 Mimo 2.4/5GHz 2xSMA M RP - LMR100 - 3m

GNSS ANTENNAS

MTX-Antenna STUB OPN08 GPS

Stub antenna

- Frequency: 1575.42/1620 MHz
- Connector: SMD
- Gain: 0.40dBi; 1.60dBi; 3.50dBi; 3.60dBi; 2.10dBi
- Dimensions: 28.0 x 8.0 x 3.3 (mm)



ORDERING INFORMATION

118016180	MTX-Antenna STUB OPN08 GPS/Glonass/Beidou Active 28dB SMA M
118016186	MTX-Antenna STUB OPN08 GPS/Glonass/Beidou Active 28dB SMA M R/A

MTX-Antenna STUB Active GPS

Stub antenna

- Frequency: 1575.42 MHz (GPS)
- Connector: SMA M
- LNA Gain: 18 dBi
- Voltage: 1.5-3V
- Dimensions: 9.3x57 mm
- Omnidireccional: for the interior of vehicles



ORDERING INFORMATION

118013005	MTX-Antenna STUB GPS Active SMA M
118013001	MTX-Antenna STUB GPS Active SMA M R/A

MTX-Antenna STUB Pasive GPS/Glonass

Stub antenna

- Frequency: 1575.42/1620 MHz (GPS/Glonass)
- Connector: SMA M
- Gain: 1.5 dBi
- Dimensions: 7.8x40 mm



ORDERING INFORMATION

118013004	MTX-Antenna STUB GPS/GNSS Passive SMA M R/A
-----------	---

MTX-Antenna STUBBY GPS

Stub antenna

- Frequency: 1575.42 MHz (GPS)
- Connector: SMA M
- LNA Gain: 26 dBi
- Voltage: 3V
- Dimensions: 18x67 mm
- Omnidireccional: for terminals



ORDERING INFORMATION

118012165	MTX-Antenna STUBBY GPS SMA M 26dB 3Vcc
118012164	MTX-Antenna STUBBY GPS SMA M R/A 26dB 3Vcc

MTX-Antenna Screwed ESFERA IP67 GPS

Screwed antenna

- Frequency: 1575.42 MHz
- Connector: SMA F
- Gain: 30 dB
- Dimensions: 115 x 30 mm



ORDERING INFORMATION

118009358	MTX-Antenna Screwed ESFERA IP67 GPS SMA F
-----------	---

MTX-Antenna Screwed GPS 5V

Screwed antenna

- Frequency: 1575.42 MHz
- Connector: TNC F
- Gain: 28 dBi
- Dimensions: 64.5 mm diameter x 40 mm



ORDERING INFORMATION

199900449	MTX-Antenna Screwed GPS 26dB 5V TNC F (Trimble Bulkhead 70228-70)
-----------	---

MTX-Antenna Screwed GPS 3V

Screwed antenna

- Frequency: 1575.42 MHz
- Connector: TNC F
- Gain: 28 dBi
- Dimensions: 64.5 mm diameter x 40 mm



ORDERING INFORMATION

199900451	MTX-Antenna Screwed GPS 26dB 3V TNC F (Trimble Bulkhead 70228-00)
-----------	---

MTX-Antenna Screwed OPN4701 GPS-GNSS

Screwed antenna

- Frequency: 1575.42, 1598-1606
- Connector: SMA M
- Gain: Active GAIN (Db): 28 @ 2.7 V
- Dimensions: Ø 52 x 17.5



ORDERING INFORMATION

118016206	MTX-Antenna Screwed OPN4701 GPS-GNSS SMA M - LL100 - 5m
-----------	---

MTX-Antenna Magnetic GPS

Magnetic antenna

- Frequency: 1575.42 MHz (GPS)
- Connector: SMA M/other
- LNA Gain: 27 dBi
- Voltage: 3-5V
- Dimensions: 38x34x12 mm



ORDERING INFORMATION

118009022	MTX-Antenna Magnetic GPS MCX M - RG174 - 5m
118009010	MTX-Antenna Magnetic GPS MCX M R/A - RG174 - 5m
118009027	MTX-Antenna Magnetic GPS MMCX M - RG174 - 5m
118009196	MTX-Antenna Magnetic GPS SMA M - RG174 - 200mm
118009221	MTX-Antenna Magnetic GPS SMA M - RG174 - 8m
118009012	MTX-Antenna Magnetic GPS SMB F - RG174 - 5m

MTX-Antenna Magnetic GPS460 GPS

Magnetic antenna

- Frequency: 1575.42 MHz (GPS)
- Connector: SMA M/Others
- LNA Gain: 26 dBi
- Voltage: 3-5V
- Dimensions: 45x45x14.6 mm



ORDERING INFORMATION

118012133	MTX-Antenna Magnetic GPS460 GPS MCX M RA - RG174 - 3m, extra silicon on cable exit
118012128	MTX-Antenna Magnetic GPS460 GPS SMA M - RG174 - 3m

MTX-Antenna Magnetic A2 GPS

Magnetic antenna

- Frequency: 1575.42±3MHz
- Connector: MCX M
- Gain: 2dBic
- Dimensions: 25x25x4mm



ORDERING INFORMATION

118006119	MTX-Antenna Magnetic A2 GPS MCX M - RG174 - 1.5m
118006120	MTX-Antenna Magnetic A2 GPS MCX M - RG174 - 3m
118006118	MTX-Antenna Magnetic A2 GPS MCX M - RG174 - 2m
118006125	MTX-Antenna Magnetic A2 GPS SMA M - RG174 - 3m
118006126	MTX-Antenna Magnetic A2 GPS SMA M - RG174 - 5m

MTX-Antenna Magnetic GPS

Magnetic antenna

- Frequency: 1575.42 MHz
- Connector: TNC M
- Gain: 30 dB



ORDERING INFORMATION

118009321	MTX-Antenna Magnetic GPS TNC M - RG174 - 800mm
118009326	MTX-Antenna Magnetic GPS SMA M - RG174 - 800mm

MTX-Antenna Magnetic OPN GPS-GLONASS

Magnetic antenna

- Frequency: 1575.42/1592-1610 MHz (GPS/Glonass)
- Connector: SMA M/other
- LNA gain: 26/27 dBi
- Voltage: 3-5V
- Dimensions: 54.5x14.6 mm



ORDERING INFORMATION

118016060

MTX-Antenna Magnetic OPN7501M GPS-GNSS SMA M - RG174 -3m

MTX-Antenna Magnetic Trimble GPS

Magnetic antenna

- Frequency: 1575.42 MHz (GPS)
- Connector: SMA M
- LNA Gain: 28 dBi
- Voltage: 4.5-5.5V
- Dimensions: 30.8x35.8x11.8 mm



ORDERING INFORMATION

199900426

MTX-Antenna Magnetic Trimble Mini Mag 3V GPS SMA M - RG174 - 5m 66800-52

MTX-Antenna Magnetic/Adhesive OPN450 GPS/Glonass

Magnetic/adhesive antenna

- Frequency: 1575 MHz
- Connector: Fakra C Jack F
- Gain: 26-28 @ 3-5 V
- Dimensions: 40x40x12.5/13.5 mm



ORDERING INFORMATION

118016135

MTX-Antenna Magnetic/Adhesive OPN450 GPS/Glonass Fakra C Jack-F - RG174 - 2m

118016189

MTX-Antenna Magnetic/Adhesive OPN450 GPS/Glonass Fakra C Jack-F - RG174 - 3m

MTX-Antenna Magnetic/Adhesive OPN4D01MP GPS/GNSS Passive

Magnetic/adhesive antenna

- Frequency: 1575.42, 1598-1606 MHz
- Connector: SMA M
- Gain: 28 @ 2.7 V
- Dimensions: 41x34x13.5/14.5 mm



ORDERING INFORMATION

118016141	MTX-Antenna Magnetic/Adhesive OPN4D01MP GPS/GNSS Passive SMA M - RG174 - 1m
118016172	MTX-Antenna Magnetic/Adhesive OPN4D01MP GPS/GNSS Passive SMA M - RG174 - 3m

MTX-Antenna Screwed OPN GPS

Screwed antenna

- Frequency: 1575.42 MHz (GPS)
- Connector: SMB M/other
- LNA Gain: 26/28 dBi
- Voltage: 2.7-5.5V
- Dimensions: 41x19 mm



ORDERING INFORMATION

118016025	MTX-Antenna Screwed OPN410B GPS SMB F - RG174 - 2.5m
-----------	--

MTX-Antenna Screwed GPS/Glonass

Screwed antenna

- Frequency: 1575.42 -1606 MHz (GPS)
- Connector: SMB M/other
- LNA Gain: 26/28 dBi
- Voltage: 2.7-5.5V
- Dimensions: 60x15 mm



ORDERING INFORMATION

118016113	MTX-Antenna Screwed OPN7401 GPS-GNSS TNC M - RG174 -3m
-----------	--

MTX-Antenna Screwed OPN4701 GPS-GNSS

Screwed antenna

- Frequency: 1575.42, 1598-1606 MHz
- Connector: SMA M
- Gain: 28 @ 2.7 V
- Dimensions: Ø 52x17.5 mm



ORDERING INFORMATION

118016151	MTX-Antenna Screwed OPN4701 GPS-GNSS SMA M - RG174 -1.5m
-----------	--

MTX-Antenna Adhesive GPS450 GPS

Adhesive antenna

- Frequency: 1575.42 MHz (GPS)
- Connector: SMA M/other
- LNA Gain: 25 dBi
- Voltage: 3-5V
- Dimensions: 45x45x14.5 mm



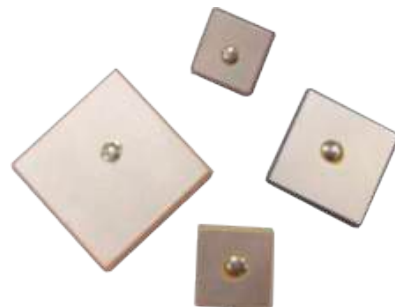
ORDERING INFORMATION

118012127	MTX-Antenna Adhesive GPS450 GPS SMA M - RG174 - 3m
118012192	MTX-Antenna Adhesive GPS450 GPS SMB F - RG174 - 4m

MTX-Antenna Internal Ceramic Chip GPS

Internal antenna

- Frequency: GPS 1575.42 MHz/Glonass 1592-1610 MHz
- Gain: 2 -5 dBi



ORDERING INFORMATION

118017018	MTX-Antenna Internal Ceramic CHIP GPS
-----------	---------------------------------------

MTX-Antenna Internal SINICA GPS Glonass

Internal PCB antenna

- Frequency: GPS 1559–1609 MHz
- LNA Gain: 3- dBi
- Dimensions: 7.0x5.8x0.4.15 mm



ORDERING INFORMATION

118011034	MTX-Antenna Internal PCB Sinica GPS 1559-1609MHz 7x7x1.1mm (SR4G008)
-----------	--

MTX-Antenna Internal Bentoni GPS/Glonass

Internal antenna

- Frequency: 1559–1609 MHz
- Connector: U.FL
- Gain: -1.2 dBi
- Dimensions: 40.0x14.0x0.15 mm



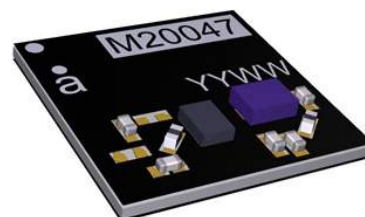
ORDERING INFORMATION

118011036	MTX-Antenna Internal Bentoni GPS/Glonass U.FL1.13 - 100mm (SRFG017-100)
-----------	---

MTX-Antenna Internal PCB GPS/Glonass

Internal PCB antenna

- Frequency: GPS 1559-1609 MHz
- Gain: 18.5 dB
- Dimensions: 7x7x1.1 mm



ORDERING INFORMATION

118011043	MTX-Antenna Internal PCB GPS/GLONASS 1559-1609MHz 7x7x0.9mm (M20047-1)
-----------	--

MTX-Antenna Patch Active GPS - 13x13

Patch antenna

- Frequency: GPS 1575.42 MHz
- Connector: U.FL
- LNA Gain: 30 dBi
- Voltage: 3-5 V
- Dimensions: 13x13x7 mm



ORDERING INFORMATION

118009090	MTX-Antenna Patch Active GPS - 13x13 - U.FL - 150mm
118009227	MTX-Antenna Patch Active GPS - 13x13 - U.FL - 35mm
118009058	MTX-Antenna Patch Active GPS - 13x13 - U.FL - 57mm

MTX-Antenna Patch Active GPS - 13x13

Patch antenna

- Frequency: GPS 1575.42 MHz
- Connector: U.FL
- LNA Gain: 26 dBi
- Voltage: 3-5 V
- Dimensions: 13x13.4x5.5 mm



ORDERING INFORMATION

118012236	MTX-Antenna Patch GPS 26dB 3.3VDC 13.4x13.4x5.5mm - U.FL - 45mm
-----------	---

MTX-Antenna Patch Active GNSS - 13x13x2.3

Patch antenna

- Frequency: 1575.42 MHz
- Gain: -2 dBic
- Dimensions: 13 x 13 x 2.3 mm



ORDERING INFORMATION

118016050	MTX-Antenna Patch GNSS 13x13x2.3
-----------	----------------------------------

MTX-Antenna Patch OPN GPS/Glonass 25x25

Patch antenna

- Frequency: GPS 1575.42 MHz/Glonass 1592-1610 MHz
- Connector: U.FL
- LNA Gain: 23-24 dB
- Voltage: 2.7V -5.5V
- Dimensions: 25x25x4 mm



ORDERING INFORMATION

118016058	MTX-Antenna Pach OPN401 GPS/GNSS 25x25 U.FL - 155mm
-----------	---

MTX-Antenna Patch OPNM013 GPS

Patch antenna

- Frequency: GPS (1575.42 MHz)/GLONASS (1592 - 1610 MHz)
- Connector: U.FL
- Gain: 15 dB
- Dimensions: 13.5x13.5x8.4 mm



ORDERING INFORMATION

118016138	MTX-Antenna Patch OPNM013 GPS 15db13.5x13.5 MHF4 - 100mm
118016149	MTX-Antenna Patch OPNM013 GPS 15db13.5x13.5 MHF4 - 37mm

MTX-Antenna BULLET GPS-Glonass 30dB 3-5V

Bullet antenna

- Frequency: GPS L1 1575.42 \pm 3MHz
BDS B1 1561 \pm 3MHz
GLO G1 1602 \pm 3MHz Connector: U.FL
- Gain: (3V): 26dB \pm 3dB (GPS); (5V): 28dB \pm 3dB (GPS)
- Connector: TNC F
- Dimensions: 77.5mm x 66.2mm



ORDERING INFORMATION

199900524	MTX-Antenna BULLET 360T Trimble GPS-Glonass-Galileo-Beidou 30dB 3-5V TNC F (101898-00)
199900525	MTX-Antenna BULLET 360T Trimble GPS-Glonass-Galileo-Beidou 30dB 3-5V F F (101898-10)

MTX-Antenna BULLET GPS L1 L2 35dB 3V

Bullet antenna

- Frequency: 1575.42 & 1227.60 MHz
- Gain: 3.3 V: 32dB; 5 V: 36dB
- Connector: TNC F
- Dimensions: 77.5mm x 66.2mm



ORDERING INFORMATION

199900521	MTX-Antenna Bullet DB Trimble GPS L1 L2 35dB 3V TNC F (94859-00)
-----------	--

169 MHz ANTENNAS

MTX-Antenna Omni Fiberglass 169 MHz 2 dBi

Omni Fiberglass antenna

- Frequency: 169 MHz
- Connector: N F
- Gain: 2 dBi
- Dimensions: 480 mm length + bracket
- Polarization: Lineal-vertical



ORDERING INFORMATION

118012190

MTX-Antenna Omni FIBERGLASS 169MHz 2dBi N F

MTX-Antenna YAGI 169 MHz

Yagi antenna

- Frequency: 169 MHz
- Connector: N F
- Gain: 7/8.5 dBi
- Dimensions: 990x1110/990x985 mm



ORDERING INFORMATION

600005018

MTX-Antenna YAGI 169MHz 7dBi N F

600005012

MTX-Antenna YAGI 169MHz 8.5dBi N F

433 MHz ANTENNAS

433 MHz ANTENNAS

MTX-Antenna WHIP 433 Mhz

Whip antenna

- Frequency: 433 MHz
- Connector: SMA M
- Gain: 0 dBi
- Dimensions: 170x14.5 mm



ORDERING INFORMATION

118012234	MTX-Antenna Whip 433MHz - SMA M
-----------	---------------------------------

MTX-Antenna STUB 433 MHz

Stub antenna

- Frequency: 433 MHz
- Connector: SMA M
- Gain: 0 dBi
- Dimensions: 80x5.5 mm



ORDERING INFORMATION

118007026	MTX-Antenna STUB 433MHz SMA M R/A
118007027	MTX-Antenna STUB 433MHz SMA M

MTX-Antenna STUB L05 OPN0115 White 433 Mhz

Stub antenna

- Frequency: 433 MHz
- Connector: SMA M
- Gain: -4.4 dBi
- Dimensions: 56x9.5 mm



ORDERING INFORMATION

118016153	MTX-Antenna STUB L05 OPN0115White 433MHz SMA M
-----------	--

MTX-Antenna STUB L4 OPN0B15 433 Mhz

Stub antenna

- Frequency: 433-435
- Connector: SMA M R/A
- Gain: ~-1.2 (dBi)
- Dimensions: 44 x 19.1 × 9



ORDERING INFORMATION

118016233	MTX-Antenna Stub L4 OPN0B15 433Mhz SMA M R/A
-----------	--

MTX-Antenna STUB L05 OPNz92 433 Mhz

Stub antenna

- Frequency: 433 MHz
- Connector: SMA M R/A
- Gain: dBi
- Dimensions: 44 x 19.1 × 9

ORDERING INFORMATION

118016240	MTX-Antenna Stub OPNz92 433Mhz SMA M R/A
-----------	--

MTX-Antenna YAGI 433 MHz

Yagi antenna

- Frequency: 433 MHz
- Connector: N F
- Gain: 5 dBi
- Cable length: 1m
- Power: 100W
- Dimensions: 400x365 mm
- Polarization: Linear



ORDERING INFORMATION

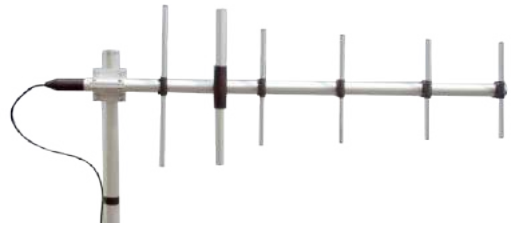
118006102	MTX-Antenna YAGI JC 433MHz 5dBi N F - RG58 - 1m
-----------	---

433 MHz ANTENNAS

MTX-Antenna YAGI 433-470 MHz

Yagi antenna

- Frequency: 433-470 MHz
- Connector: N F
- Gain: 11 dBi
- Dimensions: 1180x400/1130x375 mm



ORDERING INFORMATION

600005010

MTX-Antenna YAGI 433-470MHz 11dBi N F

MTX-Antenna Adhesive OPN5415 433 MHz

Adhesive antenna

- Frequency: 433 MHz
- Connector: customizable
- Gain: ~2.4 dBi
- Dimensions: 60x112.5x11.3 mm



ORDERING INFORMATION

118016142

MTX-Antenna Adhesive OPN5415 433MHz - RG174 - 2m

MTX-Antenna Omni FIBERGLASS 433-470 MHz

Omni Fiberglass antenna

- Frequency: 433-470 MHz
- Connector: N F
- Gain: 2 dBi
- Dimensions: 780 mm



ORDERING INFORMATION

600005011

MTX-Antenna Omni FIBERGLASS 433-470 MHz 2dBi N F - RG58 - 5m

MTX-Antenna PANEL ATA 433 MHz

Panel ATA antenna

- Frequency: 433 MHz
- Connector: N F
- Gain: 5 dBi
- Dimensions: 207x178x44 mm



ORDERING INFORMATION

118013553

MTX-Antenna PANEL ATA 433MHz 5dBi N F

868/915 MHz ANTENNAS

MTX-Antenna WHIP External 868 MHz

Whip antenna

- Frequency: 868 MHz
- Connector: SMA M
- Gain: 0 dBi
- Return Loss: -14 dB
- Dimensions: 84x14.5 mm
- Polarization: Linear



ORDERING INFORMATION

118012075	MTX-Antenna Whip External 868MHz SMA M
-----------	--

MTX-Antenna WHIP External 915 MHz

Whip antenna

- Frequency: 915 MHz
- Connector: SMA M
- Gain: 3 dBi
- Return Loss: -14 dB
- Dimensions: 80x14.5 mm
- Polarization: Linear



ORDERING INFORMATION

118012239	MTX-Antenna Whip External 915MHz SMA M
-----------	--

MTX-Antenna STUB 868 MHz

Stub antenna

- Frequency: 868 MHz
- Connector: SMA M
- Gain: 2 dBi
- Dimensions: 54x8 mm + connector
- Polarization: Linear



ORDERING INFORMATION

118007012	MTX-Antenna Stub 868MHz SMA M
118007011	MTX-Antenna Stub 868MHz SMA M R/A

MTX-Antenna Stub OPNZ79 868Mhz

Stub antenna

- Frequency: 868 MHz
- Connector: SMA M R/A
- Gain: dBi

ORDERING INFORMATION

118016228	MTX-Antenna Stub OPNZ79 868Mhz SMA M R/A
-----------	--

MTX-Antenna Stub EM7 868MHz

Stub antenna

- Frequency: 868 MHz
- Connector: SMA M
- Gain: 1 dBi



ORDERING INFORMATION

118009355	MTX-Antenna Stub EM7 868MHz SMA M
-----------	-----------------------------------

MTX-Antenna STUBSW 915 MHz

Stub antenna

- Frequency: 915 MHz
- Connector: SMA M
- Gain: 2 dBi
- Dimensions: 195x12.55 mm



ORDERING INFORMATION

118009323	MTX-Antenna STUBSW 915MHz 2dBi SMA M
-----------	--------------------------------------

MTX-Antenna STUBSW Screwed 868 MHz 2 dBi + Cable

Stub antenna

- Frequency: 868 MHz
- Connector: Cable
- Gain: 2 dBi
- Dimensions: 88 mm + 15mm (cable)



ORDERING INFORMATION

118009262

MTX-Antenna STUB Screwed 868MHz 2dBi - Cable U.FL 1.13 - 150mm

MTX-Antenna STUBSW Screwed OPN 868 MHz + Cable

Stub antenna

- Frequency: 868 MHz
- Connector: Cable
- Gain: 0 dBi
- Dimensions: 50x7.9 mm + cable



ORDERING INFORMATION

118016125

MTX-Antenna STUB Screwed OPN1015 868MHz SMA M - RG174 - 1m

MTX-Antenna STUBSW Screwed 868 MHz

Stub antenna

- Frequency: 868 MHz
- Connector: U.FL
- Gain: 3 dBi
- Dimensions: 187 mm



ORDERING INFORMATION

118009278

MTX-Antenna STUBSW Screwed 868MHz 3dBi - Cable U.FL 1.13 - 150mm

MTX-Antenna STUB WR868 868 MHz

Stub antenna

- Frequency: 868/915 MHz
- Connector: SMA M
- Gain: 1 dBi
- Dimensions: 54x8 mm + connector



ORDERING INFORMATION

118012109	MTX-Antenna STUB WR868 868MHz SMA M
118012070	MTX-Antenna STUB WR868 868Mhz SMA M R/A
118012329	MTX-Antenna STUB WR868 868Mhz SMA M RP R/A

MTX-Antenna STUB WS868 868 MHz

Stub antenna

- Frequency: 868/915 MHz
- Connector: SMA M
- Gain: 1 dBi
- Dimensions: 54x8 mm + connector



ORDERING INFORMATION

118012103	MTX-Antenna STUB WS868 868MHz SMA M
-----------	-------------------------------------

MTX-Antenna STUBSW 868 MHz 3 dBi

Stub antenna

- Frequency: 868 MHz
- Connector: SMA M
- Gain: 3 dBi
- Dimensions: 112 mm + connector
- Polarization: Linear-vertical



ORDERING INFORMATION

118009157	MTX-Antenna STUBSW 868MHz 3dBi SMA M
-----------	--------------------------------------

868/915 MHz ANTENNAS

MTX-Antenna STUBSW 868 MHz 5 dBi

Stub antenna

- Frequency: 868 MHz
- Connector: Cable
- Gain: 5 dBi
- Dimensions: 270x12 mm



ORDERING INFORMATION

118009151

MTX-Antenna STUBSW 868MHz 5dBi SMA M

MTX-Antenna STUBSW 868 MHz 2 dBi

Stub antenna

- Frequency: 868/915 MHz
- Connector: SMA M/other
- Gain: 2dBi
- Dimensions: 113x10 mm



ORDERING INFORMATION

118016076

MTX-Antenna STUBSW OPNW031 868/915MHz 2dBi SMA M

118016126

MTX-Antenna STUBSW OPNW031 868/915MHz 2dBi SMA M RP

MTX-Antenna STUBSW Screwed 868/915 MHz 5 dBi + Cable

Stub antenna

- Frequency: 868/915 MHz
- Connector: Cable
- Gain: 5 dBi
- Dimensions: 270x12 mm + connector



ORDERING INFORMATION

118009188

MTX-Antenna STUBSW Screwed 868MHz 5dBi + cable 127mm - U.FL

118009216

MTX-Antenna STUBSW Screwed 915MHz 5dBi + cable 127mm - U.FL

MTX-Antenna Magnetic Whip 868 MHz 3 dBi

Magnetic whip antenna

- Frequency: 868 MHz
- Connector: SMA M
- Gain: 3 dBi
- Dimensions: 93.8x30.9 mm



ORDERING INFORMATION

118016085

MTX-Antenna Magnetic Whip OPN3015M 868MHz SMA M - RG174 - 5m

MTX-Antenna Magnetic Whip L30 Lora/868MHz

Magnetic whip antenna

- Frequency: 868 MHz
- Connector: SMA M
- Gain: 5 dBi



ORDERING INFORMATION

118009361

MTX-Antenna Magnetic Whip L30 Lora/868MHz 5dBi SMA M - RG58 - 3m

MTX-Antenna Screwed OPN 915 MHz

Screwed antenna

- Frequency: 915 MHz
- Connector: N M
- Gain: 2 dBi
- Dimensions: 77.4x15 mm



ORDERING INFORMATION

118016118

MTX-Antenna Screwed OPN6615B 915MHz dBi N M - R174 - 3m

MTX-Antenna Screwed OPN6615B LoRa/868MHz

Screwed antenna

- Frequency: 863-870
- Connector: SMA M
- Gain: ~2.0 (dBi)
- Dimensions: Ø 77.3 x 15



ORDERING INFORMATION

118016225	MTX-Antenna Screwed OPN6615B LoRa/868MHz 3.8dBi SMA M - LL100 - 2m
-----------	--

MTX-Antenna Screwed Button 868-915 MHz

Screwed antenna

- Frequency: 868-915 MHz
- Connector: SMA M/SMA M RP
- Gain: 1.37 dBi
- Dimensions: 62.7x27.5 mm



ORDERING INFORMATION

118012412	MTX-Antenna Screwed Button 868-915MHz SMA M - RG174 - 2m
118012414	MTX-Antenna Screwed Button 868-915MHz SMA M RP - RG174 - 2m

MTX-Antenna Omni FIBERGLASS 868 MHz 5.5 dBi

Omni Fiberglass antenna

- Frequency: 868 MHz
- Connector: SMA M/other
- Gain: 5.5 dBi
- Dimensions: 1045mm + bracket
- Polarization: Lineal-vertical



ORDERING INFORMATION

118012359	MTX-Antenna Omni FIBERGLASS 868MHz 5.5dBi SMA M - RG58 - 5m
-----------	---

MTX-Antenna Omni FIBERGLASS 868 MHz 9 dBi

Omni Fiberglass antenna

- Frequency: 868 MHz
- Connector: N F
- Gain: 9 dBi
- Dimensions: 1340 mm
- Polarization: Lineal-vertical



ORDERING INFORMATION

118009211

MTX-Antenna Omni FIBERGLASS 868MHz 9dBi N F

MTX-Antenna Omni FIBERGLASS SO 868/915 MHz

Omni Fiberglass antenna

- Frequency: 868/915 MHz
- Connector: N F/SMA M
- Gain: 2.15 dBi
- Dimensions: 257 mm



ORDERING INFORMATION

600005016

MTX-Antenna Omni FIBERGLASS SO 868/915MHz 2.15dBi N F

600005017

MTX-Antenna Omni FIBERGLASS SO 868/915MHz 2.15dBi SMA M - RG58 - 5m

600005022

MTX-Antenna Omni FIBERGLASS SO 868/915MHz 2.15dBi N M

MTX-Antenna Omni FIBERGLASS SPO 868/915 MHz

Omni Fiberglass antenna

- Frequency: 868/915 MHz
- Connector: N F
- Gain: 6 dBi
- Dimensions: 840 mm



ORDERING INFORMATION

600005014	MTX-Antenna Omni FIBERGLASS SPO 868/915MHz 6dBi N F
600005015	MTX-Antenna Omni FIBERGLASS SPO 868/915MHz 6dBi SMA M - RG58 - 5m
600005026	MTX-Antenna Omni FIBERGLASS SPO LoRa/868/915MHz 6dBi SMA M RP - RF100 - 5m

MTX-Antenna Panel 868 MHz

Panel antenna

- Frequency: 806-894 MHz
- Connector: N F
- Gain: 8 dBi
- Dimensions: 228x193x39 mm
- Polarisation: Linear vertical



ORDERING INFORMATION

118009191	MTX-Antenna PANEL 868MHz N F
-----------	------------------------------

MTX-Antenna Panel ATA 868 MHz

Panel antenna

- Frequency: 868 MHz
- Connector: N F
- Gain: 8 dBi
- Dimensions: 190x190x25 mm



ORDERING INFORMATION

118013552	MTX-Antenna PANEL ATA 868MHz 8dBi N F
-----------	---------------------------------------

MTX-Antenna YAGI 868 MHz

Yagi antenna

- Frequency: 868 MHz
- Connector: SMA M
- Gain: 7 dBi
- Dimensions: 495x290x55 mm



ORDERING INFORMATION

118006103	MTX-Antenna YAGI JC 868MHz 7dBi N F - RG58 - 1m
-----------	---

MTX-Antenna Internal MONTANA 868/900 MHz

Internal antenna

- Frequency: 863–870 MHz and 902-928 MHz
- Connector: U.FL/other
- Gain: 2.4 dBi
- Dimensions: 45x0.15 mm



ORDERING INFORMATION

118011029	MTX-Antenna Internal MONTANA 868/928MHz U.FL 1.13 - 150mm
118011039	MTX-Antenna Internal MONTANA 868/928MHz U.FL 1.13 - 100mm

MTX-Antenna Internal MORAVA 868MHz

Internal antenna

- Frequency: 868 MHz
- Connector: U.FL
- Gain: 1 dBi



ORDERING INFORMATION

118012141	MTX-Antenna Internal MORAVA 868MHz U.FL - 100mm
-----------	---

MTX-Antenna Internal OPN 868 MHz

Internal antenna

- Frequency: 868 MHz
- Connector: U.FL/other
- Gain: 0.8 dBi
- Dimensions: 40x7x0.2 mm



ORDERING INFORMATION

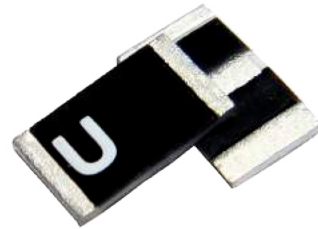
118016112

MTX-Antenna Internal OPNF0115P 868MHz U.FL - 120mm

MTX-Antenna Internal PCB 868 MHz

Internal antenna

- Frequency: 863-870 MHz
- Connector: SMD mounting
- Gain: 0.9 dBi
- Dimensions: 5x3x0.5 mm



ORDERING INFORMATION

118017017

MTX-Antenna Internal Ceramic CHIP ISM 868MHz

COMBI GSM+GPS ANTENNAS

MTX-Antenna Screwed SHARK GSM + GPS

Screwed SHARK antenna

- Frequency: 900/1800 MHz
- Connector: FME F/other
- Gain: 0 dBi
- Frequency GNSS: 1575.42 MHz (GPS)
- Connector: SMA M/other
- LNA Gain: 27 dBi
- Voltage: 3-5V
- Dimensions: 69 mm



ORDERING INFORMATION

118009233

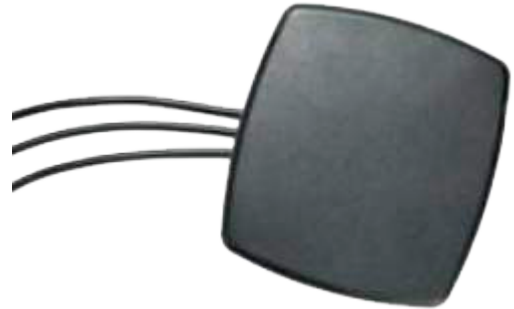
MTX-Antenna Screwed SHARK (GSM2 SMA M) + (GPS SMA F) - RG174 - 5m

COMBI GSM+GPS+WIFI ANTENNAS

MTX-Antenna Magnetic ESFERA GSM+GPS

Magnetic antenna

- Frequency: 800/868/900/1800 MHz
- Connector: FME M/other
- Gain: 0 dBi
- Frequency: 2.4GHz
- Connector: FME M/other
- Gain: 0 dBi
- Frequency GNSS: 1575.42 MHz (GPS)
- Connector: SMA M/other
- LNA Gain: 26/27 dBi
- Voltage: 2.7-5 V
- Dimensions: 74x80x11 mm



ORDERING INFORMATION

118016038

MTX-Antenna Screwed OPN640B (GSM2 SMA M) + (GPS SMA M) + (2.4GHz SMA M) - RG174 - 5m

COMBI 3G+GPS ANTENNAS

MTX-Antenna Magnetic/Adhesive OPN GSM5+GPS

Magnetic antenna

- Frequency: 900/1800/1900/2100 MHz
- Connector: Fakra/other
- Gain: 0 dBi
- Frequency GNSS: 1575.42 MHz (GPS)
- Connector: Fakra/other
- LNA Gain: 32 dBi
- Voltage: 1.8 -5V
- Dimensions: 40x50x12.5 mm



ORDERING INFORMATION

118016123	MTX-Antenna Magnetic/Adhesive OPN460MP (GSM5 Fakra D Jack-F) + (GPS Fakra C Jack-F) - RG174 - 2m
118016217	MTX-Antenna Magnetic/Adhesive OPN4600MP (GSM5 Fakra D Jack-F) + (GPS Fakra C Jack-F) - LL100 - 1.5m
118016237	MTX-Antenna Magnetic/Adhesive OPN4600MP (GSM5 Fakra D Jack-F) + (GPS Fakra C Jack-F) - LL100 - 150mm

MTX-Antenna Screwed CPG GSM5+GPS

Screwed antenna

- Frequency: 824-960/1710-2170 MHz
- Connector: FME M/Others
- Gain: 3dBi
- Frequency GNSS: 1575.42 MHz (GPS)
- Connector: SMA M/other
- LNA Gain: 28 dBi
- Voltage: 3-5 V
- Dimensions: 102x33.5 mm



ORDERING INFORMATION

118012225	MTX-Antenna Screwed CPG (GSM5 SMA M) + (GPS/GNSS SMA M) - RG174 - 3m
118012396	MTX-Antenna Screwed CPG (GSM5 SMA M RP) + (GPS SMA M RP) - RG174 - 2m

MTX-Antenna Screwed ESFERA GSM5+GPS

Screwed antenna

- Frequency: 800/900/1800/1900/2100 MHz
- Connector: FME F/other
- Gain: 0 dBi
- Frequency GNSS: 1575.42 MHz (GPS)
- Connector: SMA M/other
- LNA Gain: 27 dBi
- Voltage: 3-5V
- Dimensions: 53x23 mm



ORDERING INFORMATION

118009144	MTX-Antenna Screwed ESFERA (GSM5 FME F) + (GPS SMA M) - RG174 - 3m
118009201	MTX-Antenna Screwed ESFERA (GSM5 FME F) + (GPS SMA M) - RG174 - 5m
118009167	MTX-Antenna Screwed ESFERA (GSM5 SMA M) + (GPS SMA M) - RG174 - 5m

MTX-Antenna Screwed OPN GSM5+GPS

Screwed antenna

- Frequency: 800/900/1800/1900/2100 MHz
- Connector: SMA M/FAKRA/other
- Gain: 2.2 dBi
- Frequency GNSS: 1575.42 MHz (GPS)
- Connector: SMA M/other
- LNA Gain: 26-27 dBi
- Voltage: 3-5V
- Dimensions: 75x15 mm



ORDERING INFORMATION

118016124	MTX-Antenna Screwed OPN660 (GSM5 Fakra D Jack-F) + (GPS Fakra C Jack-F) - RG174 - 200mm
118016006	MTX-Antenna Screwed OPN660 (GSM5 Fakra D Jack-F) + (GPS Fakra C Jack-F) - RG174 - 1m
118016211	MTX-Antenna Screwed OPN6600 (GSM5 Fakra D Jack-F) + (GPS Fakra C Jack-F) - RG174 - 3m

MTX-Antenna Screwed SHARK OPN GSM5+GPS

Screwed antenna

- Frequency: 800/900/1800/1900/2100 MHz
- Connector: FME F/other
- Gain: 2.2 dBi
- Frequency GNSS: 1575.42 MHz (GPS)/Glonass
- Connector: SMA M/other
- LNA Gain: 26/27 dBi
- Voltage: 2.7-5.5V
- Dimensions: 98x59.5x48 mm



ORDERING INFORMATION

118016054	MTX-Antenna Screwed OPN860B (GSM5 FME F)+(GPS SMB F) - RG174 - 500mm
118016022	MTX-Antenna Screwed OPN860B (GSM5 FME M)+(GPS SMB F) - RG174 - 500mm
118016121	MTX-Antenna Screwed OPN860BG (GSM5 Fakra D Jack-F)+(GPS/Glonass Fakra C Jack-F) - RG174 - 5m

MTX-Antenna Screwed ROOFBALL GSM3+GPS

Screwed antenna

- Frequency: 900/1800/2100 MHz
- Connector: FME M/SMA M/other
- Gain: 0 dBi
- Frequency GNSS: 1575.42 MHz (GPS)
- Connector: SMA M/other
- LNA Gain: 27 dBi
- Voltage: 3-5 V
- Dimensions: 53x30x30 mm



ORDERING INFORMATION

118009078	MTX-Antenna Screwed ROOFBALL (GSM3 FME F) + (GPS SMA M) - RG174U - 5m
118009096	MTX-Antenna Screwed ROOFBALL (GSM3 SMA M) + (GPS SMA M) - RG174 - 5m
118009245	MTX-Antenna Screwed ROOFBALL (GSM3 U.FL) + (GPS U.FL) 1.32 - 300mm

MTX-Antenna Adhesive BLADE GSM5+GPS

Adhesive antenna

- Frequency: 800/900/1800/1900/2100 MHz
- Connector: FME M/other
- Gain: 2.5 dBi
- Frequency GNSS: 1575.42 MHz (GPS)
- Connector: SMA M/other
- LNA Gain: 27 dBi
- Voltage: 3-5 V
- Dimensions: 147x26x16 mm



ORDERING INFORMATION

118009145	MTX-Antenna Adhesive BLADE (GSM5 FME F) + (GPS SMA M) - RG174 - 3m
118009146	MTX-Antenna Adhesive BLADE (GSM5 SMA M) + (GPS SMA M) - RG174 - 3m

MTX-Antenna Adhesive ESFERA GSM5+GPS

Adhesive antenna

- Frequency: 800/900/1800/1900/2100 MHz
- Connector: FME M/SMA M/other
- Gain: 0dBi
- Frequency GNSS: 1575.42 MHz (GPS)
- Connector: SMA M/other
- LNA Gain: 27 dBi
- Voltage: 3-5 V
- Dimensions: 50x17 mm
- Orientation: glass mounting, GPS on adhesive side



ORDERING INFORMATION

118009213	MTX-Antenna Adhesive ESFERA (GSM5 FME F) + (GPS SMA M) - RG174 - 0.5m
118009033	MTX-Antenna Adhesive ESFERA (GSM5 FME F) + (GPS SMA M) - RG174 - 1m
118009207	MTX-Antenna Adhesive ESFERA (GSM5 FME F) + (GPS SMA M) - RG174 - 2m
118009011	MTX-Antenna Adhesive ESFERA (GSM5 FME F) + (GPS SMA M) - RG174 - 5m
118009228	MTX-Antenna Adhesive ESFERA (GSM5 SMA M) + (GPS SMA M) - RG174 - 2m
118009346	MTX-Antenna Adhesive ESFERA (GSM5 SMA M) + (GPS SMA M) - RG174 - 1m

MTX-Antenna Adhesive OPN GSM33+GPS

Adhesive antenna

- Frequency: 900/1800/1900/2100 MHz
- Connector: SMA M/Fakra/other
- Gain: 0 dBi
- Frequency GNSS: 1575.42 MHz (GPS)
- Connector: Fakra/other
- LNA Gain: 26/27 dBi
- Voltage: 2.7/5.5 V
- Dimensions: 14.3x77x34 mm



ORDERING INFORMATION

118016009	MTX-Antenna Adhesive OPN425 (GSM3 Fakra D Jack-F) + (GPS Fakra C Jack-F) - RG174 - 1.5m
118016010	MTX-Antenna Adhesive OPN425 (GSM3 Fakra D Jack-F) + (GPS Fakra C Jack-F) - RG174 - 5m
118016053	MTX-Antenna Adhesive OPN425 (GSM3 SMA M) + (GPS/GNSS SMA M) - RG174 - 3m

MTX-Antenna Adhesive OPN GSM5+GPS

Adhesive antenna

- Frequency: 824-960/1710-2170 MHz
- Connector: SMA M/Fakra/other
- Gain: 2.4/3.0 dBi
- Frequency GNSS: 1575.42-1606 MHz (GPS-Glonass)
- Connector: Fakra/other
- LNA Gain: 28 dBi
- Voltage: 1.5/3.6 V
- Dimensions: 83x35x13.3 mm



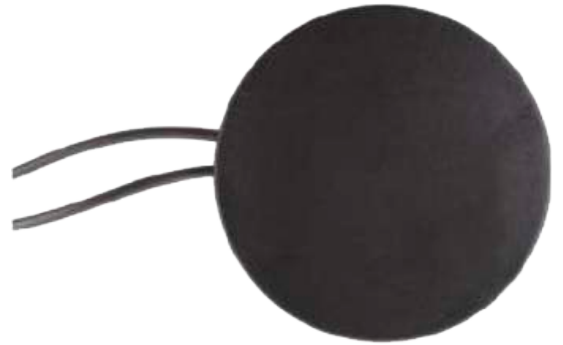
ORDERING INFORMATION

118016089	MTX-Antenna Adhesive OPN4800 (GSM5 FME F) + (GPS SMA M) - RG174 - 5m
-----------	--

MTX-Antenna Adhesive OPN GSM5+GPS

Adhesive antenna

- Frequency: 824-960/1710-2170 MHz
- Connector: SMA M/Fakra/other
- Gain: 2.14 dBi
- Frequency GNSS: 1575.42 MHz (GPS)
- Connector: FME F/SMA M/other
- LNA gain: 26/27 dBi
- Voltage: 2.7/5.5 V
- Dimensions: 77x12 mm



ORDERING INFORMATION

118016061

MTX-Antenna Adhesive OPN620P (GSM5 - FME F) + (GPS - SMA M) - RG174 3m

COMBI 3G+GPS/GLONASS+WIFI ANTENNAS

MTX-Antenna Adhesive OPN GSM5+GPS+WiFi 2.4

Adhesive antenna

- Frequency: 800/900/1800/1900/2100 MHz
- Connector: FME M/other
- Frequency: 2.4 GHz
- Connector: FME M/other
- Frequency GNSS: 1575.42 MHz (GPS)-1610 MHz (GNSS)
- Connector: SMA M/other
- LNA Gain: 26/27 dBi
- Voltage: 2.7-5 V
- Dimensions: 77x34x14 mm



ORDERING INFORMATION

118016055	MTX-Antenna Adhesive OPN426 (GSM5 Fakra D F)+(GPS Fakra C F)+(2.4GHz Fakra I F) - RG174 - 2.5m
118016073	MTX-Antenna Adhesive OPN426 (GSM5 SMA M)+(GPS SMA M)+(2.4GHzSMA M) - RG174 - 2.5m
118016078	MTX-Antenna Adhesive OPN426 (GSM5 SMA M)+(GPS SMA M)+(2.4GHzSMA M) - RG174 - 3.5m
118016062	MTX-Antenna Adhesive OPN426G (GSM5 - SMA M) + (GPS/GNSS - SMA M) + (2.4MHz - SMA M) - RG174 3m

MTX-Antenna Screwed SHARK OPN GSM5+GPS+WiFi 2.4

Screwed antenna

- Frequency: 800/900/1800/1900/2100 MHz
- Connector: SMA M/other
- Gain: 2.2 dBi
- Frequency: 2.4 GHz
- Connector: SMA M/other
- Gain: 2 dBi
- Frequency GNSS: 1575.42 MHz (GPS)
- Connector: SMA M/other
- LNA Gain: 26/27 dBi
- Voltage: 2.7-5.5 V
- Dimensions: 98x59x48 mm



ORDERING INFORMATION

118016045	MTX-Antenna Screwed Shark OPN866B (GSM5 Fakra D F)+(GPS Fakra C F)+(2.4GHz Fakra I F)- RG174 - 200mm
118016041	MTX-Antenna Screwed Shark OPN866B (GSM5 Fakra D F)+(GPS Fakra C F)+(2.4MHz SMA M) - RG174 - 3m
118016216	MTX-Antenna Screwed Shark OPN8606 (GSM5 FakraD F)+(GPS FakraC F)+(2.4GHz Fakra F) LL100- 200mm
118016199	MTX-Antenna Screwed Shark OPN8606 (GSM5 FakraD F)+(GPS-GLN FakraC F)+(2.4GHz Fakra F) LL100- 200mm

COMBI 4G+GPS/GLONASS ANTENNAS

MTX-Antenna Screwed CMG LTE700/2600 MIMO+GPS

Screwed antenna

- Frequency LTE: 690-960/1710-2700 MHz x 2
- Connector: SMA M/FME M/other
- Gain: 1.9/4.3 dBi x2i
- Frequency GNSS: 1575.42-1602 MHz (GPS - Glonass)
- Connector: SMA M/other
- LNA Gain: 26 dBi
- Voltage: 2.8-5 V
- Dimensions: 102x32.5 mm



ORDERING INFORMATION

118012380	MTX-Antenna Screwed CMG (GSM5+LTE700/2600 MIMO - FME F)+(GPS - SMA M) RG174 - 1m
118012374	MTX-Antenna Screwed CMG (GSM5+LTE700/2600 MIMO - SMA M)+(GPS - SMA M) RG174 - 2m

MTX-Antenna Adhesive OPN LTE700/2600+GPS/Glonass

Adhesive antenna

- Frequency: 690-960/1710-2170/2500-2700 MHz
- Connector: SMA M/other
- Gain: 2.7/3.0/5.9 dBi
- Frequency GNSS: 1575.42/1602 MHz (GPS/ Glonass)
- Connector: SMA M/other
- LNA Gain: 28 dBi
- Voltage: 1.5-3.6 V
- Dimensions: 83x35x13 mm



ORDERING INFORMATION

118016095	MTX-Antenna Adhesive OPN4841 (GSM5-LTE700/2600 FME F R/A) + (GPS SMA M R/A) - LMR100 + RG174 - 5m
118016117	MTX-Antenna Adhesive OPN4841 (GSM5-LTE700/2600 FME F) + (GPS SMA M) - LMR100 + RG174 - 3m
118016092	MTX-Antenna Adhesive OPN4841 (GSM5-LTE700/2600 FME F) + (GPS SMA M) - LMR100 + RG174 - 5m

COMBI 4G+WIFI ANTENNAS

MTX-Antenna Adhesive LTE700/2600 +WiFi 2.4/5

Adhesive antenna

- Frequency: 690-960/1710-2170/2500-2700 MHz
- Connector: SMA M/other
- Gain: 3/3.2/5.6 dBi
- Frequency WiFi: 2.4/5 GHz
- Connector: SMA M RP/other
- Gain: 3.7/5.6 dBi
- Dimensions: 83x35x13.3 mm



ORDERING INFORMATION

118016077

MTX-Antenna Adhesive OPN4847P (GSM5-LTE700/2600 SMA M) + (2.4/5GHz SMA M RP) - RG174 - 2m

COMBI 4G+GPS+WIFI ANTENNAS

MTX-Antenna Magnetic MP-LWG +LTE +WiFi 2.4GHz+GPS/Glonass

Magnetic antenna

- Frequency LTE: 690-960/1710-2700 MHz
- Polarization: Linear
- Gain: 1.9/4.3 dBi
- VSWR: <2.5:1
- Frequency WiFi: 2.4-2.5 GHz
- Polarization: Linear
- Gain: 2 dBi
- VSWR: <2.0:1
- Frequency GNSS: 1575.42-1602 MHz GPS-Glonass
- Polarization: RHCP
- LNA Gain: 26 dBi
- Voltage: 2.8-5 V
- Connector: SMA M/other
- Dimensions: 102x38 mm



ORDERING INFORMATION

118012XXX

MTX-Antenna Magnetic MP-LWG (GSM5/LTE700/2600 SMA M)+(GPS SMA M)+(2.4MHz SMA M RP) - RG174 - 2m

MTX-Antenna Screwed LPO LTE700/2600+GPS/Glonass+WiFi 2.4/5

Screwed antenna

- Frequency LTE: 690-960/1710-2700 MHz
- Connector: 2x SMA M/other
- Polarization: Linear
- Gain: 3/4 dBi
- Frequency WiFi: 2.4-2.5/4.9-6 GHz
- Connector: 2x SMA M RP/other
- Polarization: Linear
- Gain: 5/5 dBi
- Frequency GNS: 1575.42 MHz (GPS)/Glonass
- Connector: SMA M/other
- Polarization: RHCP
- LNA Gain: 28 dBi
- Voltage: 2.8 -5 V
- Dimensions: 140x80 mm



ORDERING INFORMATION

118012375

MTX-Antenna Screwed LPO (GSM5/LTE700/2600 MIMO SMA M)+(GPS SMA M)+(2.4/5MHz SMA M RP) - RG174 - 2m

MTX-Antenna Screwed OPN6A41B GSM5+LTE700/2700+GPS

Screwed antenna

- Frequency Connection 1: 698-960, 1710-2170, 2500-2700; Connection 2: 1575.42, 1598-1606
- Connector FAKRA D Jack-F/FAKRA C Jack-F
- Gain ~0.7, ~3.4, ~4.0 (dBi)
- Dimensions: Ø 77.3 x 65.5



ORDERING INFORMATION

118016219	MTX-Antenna Screwed OPN6A41B (GSM5+LTE700/2700 Fakra D Jack-F) + (GPS Fakra C Jack-F) - LL100- 300mm
118016105	MTX-Antenna Screwed OPN6A41B (GSM5+LTE700/2700 FME F) + (GPS SMA M) - RG174 - 3m

MTX-Antenna Screwed CMG GSM5+LTE700/2600+GPS

Screwed antenna

- Frequency 690-960/1710-2700 MHz 690-960/1710-2700 MHz 1575.42-1602 MHz
- Connector: FME F/SMA M
- Gain: 1.9 / 4.3 dBi 1.9 / 4 dBi 26 dB with LNA (GPS)
- Dimensions: 102 x 33.5mm (dxh)



ORDERING INFORMATION

118012423	MTX-Antenna Screwed CMG (GSM5+LTE700/2600 MIMO - FME F)+(GPS - SMA M) RG174 - 2m
-----------	--

MTX-Antenna Screwed OPN LTE+GNSS+GSM+WiFi 2.4

Screwed antenna

- Frequency 1 & 2: 690-960/1710-2170/2500-2700 MHz
- Connector 1 & 2: SMA M/FME M/other
- Gain 1: 2.4/2.5/3.3 dBi
- Gain 2: 2/2.6/2.4 dBi
- Frequency: 2.4/5 GHz
- Connector: SMA M RP/other
- Gain: 2.3/1.9 dBi
- Frequency GNSS: 1575.42-1602 MHz GPS-Glonass
- Connector: SMA M/other
- LNA Gain: 28 dBi
- Voltage: 1.5 -3.6 V
- Dimensions: 96x90 mm



ORDERING INFORMATION

118016111

MTX-Antenna Screwed OPN7050 (GSM5+LTE - 2xFME F)+(2.4 - 2xSMA M RP)+(GPS Glns-SMA M) 4xRG178/RG174 - 5m

MTX-Antenna Screwed VT LTE700/2600+GPS+WiFi 2.4

Screwed antenna

- Frequency: 690-960/1710-2700 MHz
- Connector: SMA M/other
- Gain: 2 dBi
- Frequency: 2.4 GHz
- Connector: SMA M RP/other
- Gain: 3 dBi
- Frequency GNSS: 1575.42 MHz GPS
- Connector: SMA M/other
- LNA Gain: 28 dBi
- Voltage: 2.7-5 V
- Dimensions: 50x48 mm



ORDERING INFORMATION

118006032

MTX-Antenna Screwed VT (GSM5+LTE700/2600 SMA M) + (GPS SMA M) +(2.4GHz SMA M) - RG174 - 400mm

COMBI 5G+WIFI ANTENNAS

MTX-Antenna STUBSW PWB GSM5+LTE/5G 3.8/4.4-6GHz

Stub antenna

- Frequency: 617-960/1710-3800/4400-6000MHz
- Connector: SMA M
- Gain: 2/4/6 dBi
- Dimensions: 230X56X7



ORDERING INFORMATION

118010308	MTX-Antenna STUBSW PWB GSM5+LTE/5G 3.8/4.4-6GHz 2/4/6dBi SMA M (PWB-6-60-RSMAP)
-----------	---

MTX-Antenna Omni-293 LoRa/GSM5+LTE617/2700+5G3800+2.4GHz

Omni antenna

- Frequency: 617 – 960 MHz 1427 – 1517 MHz
1710 – 2700 MHz 3400 – 3800 MHz
- Connector: N F
- Gain: 6 dBi @ 617 - 960 MHz 6 dBi @ 1427 - 1517 MHz
9 dBi @ 1710 – 2700 MHz 8 dBi @ 3400 -3800 MHz
- Dimensions: 635 mm x Ø71 mm



ORDERING INFORMATION

118010140	MTX-Antenna Omni-293 LoRa/GSM5+LTE617/2700+5G3800+2.4GHz 9dBi N F
-----------	---

MTX-Antenna PANEL XPOL GSM5+LTE690/3800+5G 11dBi /2,4-5GHz

Panel antenna

- Frequency: Cellular: 617 – 960 MHz 1427 – 1517 MHz
1710 – 2700 MHz 3400 – 3800 MHz; WIFI: 2400 - 2500 MHz
- Connector: SMA F
- Gain: Cellular: 1 dBi @ 617 – 960 MHz 0.5 dBi @ 1427 – 1517 MHz
4.5 dBi @ 1710 – 2700 MHz 2.5 dBi @ 3400 - 3800 MHz; WIFI: 3 dBi @ 2400 - 2500 MHz
7.5 dBi @ 5000 - 7200 MHz
- Dimensions: 1112 x 200 x 47 mm



ORDERING INFORMATION

118010136	MTX-Antenna PANEL XPOL GSM5+LTE690/3800+5G 11dBi /2,4-5GHz 7dBi - 4x4 LTE / 2x2 Wi-Fi + CPE (EPNT-2)
-----------	--

COMBI GPS+WIFI ANTENNAS

MTX-Antenna Screwed OPN GPS+WiFi2.4/5

Screwed antenna

- Frequency: 2.4/5 GHz
- Connector: SMA M RP/other
- Gain: 4.4/4.8 dBi
- Frequency GNSS: 1575.42 MHz GPS
- Connector: SMA M/BNC/other
- LNA Gain: 26 dBi
- Voltage: 3-5 V
- Dimensions: 77.4x15.9 mm



ORDERING INFORMATION

118016070

MTX-Antenna Screwed OPN663B (GPS BNC)+(2.4/5GHz SMA M RP) - RG174 - 2m

MTX-Antenna Screwed LGAM

Screwed antenna

- Frequency: Element 1 (G Version) 1562-1612
Elements 2 & 3 698-960, 1710-2170, 2500-3800
Elements 4 & 5 2396-2485 & 4900-6000
- Connector: SMA M/SMA M RP
- Gain: Elements 2 & 3: 6dBi (698-960MHz) | 8dBi
(1710-3800MHz)Frequency GNSS: 1575.42 MHz
GPS
- Dimensions: 50X150X44



ORDERING INFORMATION

118010306

MTX-Antenna Screwed LGAM (GSM5/LTE/5G MIMO SMA M)+(GPS SMA M)+(2.4/5GHz x2 SMA M RP) -RG174-500mm

COMBI GPS+TETRA ANTENNAS

MTX-Antenna Magnetic OPN GPS-Glonass+TETRA

Magnetic antenna

- Frequency TETRA: 380-500 MHz
- Connector: SMA M/other
- Gain: 6 dBi
- Frequency GNSS: 1575.42/1592-1610 MHz (GPS/ Glonass)
- Connector: SMA M/other
- LNA Gain: 26-27 dBi
- Voltage: 3-5 V
- Dimensions: 150x33 mm



ORDERING INFORMATION

118016059

MTX-Antenna Magnetic OPN650 (GPS-GNSS SMA M) + (TETRA TNC M) -RG174/ RG58 -3m

16.2 MTX-Antenna Screwed GPS+TETRA

Screwed antenna

- Frequency TETRA: 380-500 MHz
- Connector: SMA M/TNC M/other
- Gain: 2 dBi
- Frequency GNSS: 1575.42 MHz (GPS)
- Connector: SMA M/TNC M/other
- LNA Gain: 25-27 dBi
- Voltage: 2.7-5.5 V
- Dimensions: 60x200 mm



ORDERING INFORMATION

118016044

MTX-Antenna Screwed OPN7507B (GPS SAM M) + (TETRA SMA M) - RG174 - 1.5m

118016067

MTX-Antenna Screwed OPN7507B - Whip_Insert Screw M5

MTX-Antenna Screwed OPN7807BG

Screwed antenna

- Frequency: Connector 1: 433-435; Connector 2: 1575.42, 1598-1610
- Connector: SMA M
- Gain: ~-0.4 (dBi)
- Dimensions: 186.5 x 63



ORDERING INFORMATION

118016227	MTX-Antenna Screwed OPN7807BG (GPS SMA M) + (TETRA TNC M) - LL100 - 1.5m
-----------	--

MTX-Antenna Screwed OPN GPS-Glonass+TETRA

Screwed antenna

- Frequency TETRA: 380-500 MHz
- Connector: SMA M/TNC M/other
- Gain: 2 dBi
- Frequency GNSS: 1575.42–1610 MHz (GPS-Glonass)
- Connector: SMA M/TNC M/other
- LNA Gain: 26-27 dBi
- Voltage: 2.7-5.5 V
- Dimensions: 175x153x59.5 mm



ORDERING INFORMATION

118016068	MTX-Antenna Screwed OPN857BG (GPS SMA M) + (TETRA TNC M) - RG174 - 5m
118016069	MTX-Antenna Screwed OPN857BG - Whip_Insert TETRA screw M6

RFID VHF ANTENNAS

MTX-Antenna Omni Fiberglass VHF 160-170 MH

Panel antenna

- Frequency: 160/170 MHz
- Connector: SMA M
- Gain: dBi



ORDERING INFORMATION

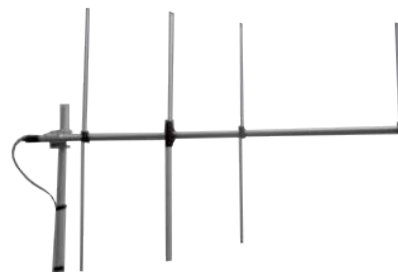
118009364

MTX-Antenna Omni Fiberglass VHF 160-170 MHz SMA M - LL195 - 5m

MTX-Antenna YAGI VHF 136 -174MHz

Panel antenna

- Frequency: 136/174 MHz
- Connector: N F
- Gain: 7.5 dBi



ORDERING INFORMATION

600005027

MTX-Antenna YAGI VHF 136 -174MHz 7.5 dBi N F

RFID UHF ANTENNAS

MTX-Antenna RFID UHF PANEL 433MHz

Panel antenna

- Frequency: 433 MHz
- Connector: N-Type F
- Gain: 7 dBi
- Dimensions: 370x370x40 mm



ORDERING INFORMATION

500404020

MTX-Antenna Panel 433MHz RFID SlenderIII (ACIOM125)

MTX-Antenna RFID UHF PANEL NOVANTA

Panel antenna

- Frequency: 865-956 MHz
- Connector: TNC F RP
- Gain: 7.0 dBic/8.5 dBic
- Return Lost: -18 dB
- Power rating: 6W
- Polarisation: Circular RHCP



ORDERING INFORMATION

500401018

MTX-Antenna RFID PANEL 20x20cm UHF 868MHz 7dBi TNC F RP

500401022

MTX-Antenna RFID PANEL 25x25cm UHF 868MHz 8.5dBi TNC F RP

500401010

MTX-Antenna RFID PANEL 30x30cm UHF 868MHz 8.5dBi TNC F RP

MTX-Antenna RFID UHF PANEL

Panel antenna

- Frequency: 868 MHz
- Connector: N F
- Gain: 8 dBi
- Dimensions: 190x190x25 mm



ORDERING INFORMATION

118013550

MTX-Antenna RFID PANEL 19X19cm UHF 868MHz 8dBi - N F

MTX-Antenna Omni GPC900 UHF BaseStation

Panel antenna

- Frequency: 870/960 MHz
- Connector: N F
- Gain: 3 dBd, 5.14 dBi
- Dimensions: Height 360mm



ORDERING INFORMATION

600005023

MTX-Antenna Omni GPC900 UHF BaseStation 870-960MHz 5,14dBi N Fi

MTX-Antenna YAGI UHF 400-475MHz

Panel antenna

- Frequency: 400-470 MHz
- Connector: N F
- Gain: 11.85 dBd – 14 dBi
- Dimensions: 2000 x 375 mm



ORDERING INFORMATION

600005028

MTX-Antenna YAGI UHF 400-475MHz 14 dBi N F

RF CABLES & CONNECTORS

MTX-Cable FME M - FME F

- Connector: FME F to FME M BH
- Cable: RG174
- Cable: LL195/RG58/CFD200



ORDERING INFORMATION

118008109	MTX-Cable FME M - FME F - RG174 - 6m
118008096	MTX-Cable FME M - FME F R/A - RG174 - 5m
118008133	MTX-Cable FME M BH - FME F - RG174 - 150mm
118008026	MTX-Cable FME M BH - FME F - RG174 - 200mm
118008099	MTX-Cable FME M BH - FME F - RG174 - 450mm
118008234	MTX-Cable FME M BH - FME F - RG174 - 1m
118008031	MTX-Cable FME M BH - FME F - RG174 - 2m
118008021	MTX-Cable FME M BH - FME F - RG174 - 5m
118003363	MTX-Cable FME M - FME F - CFD200 - 11m
118008197	MTX-Cable FME M - FME F - CFD200 - 7.5m
118008551	MTX-Cable FME M - FME F - LL195 - 10m
118008204	MTX-Cable FME M - FME F - LL195 - 5m
118008156	MTX-Cable FME M - FME F - RG58 - 10m

MTX-Cable SMA M - SMA F

- Connector: SMA M to SMA F BH
- Cable: RG174
- Cable: LL195/RG58/CFD200



ORDERING INFORMATION

118008000	MTX-Cable SMA M - SMA F (BH) - RG174 - 250mm
118008266	MTX-Cable SMA M - SMA F BH - RG174 - 500mm
118008232	MTX-Cable SMA M - SMA F BH - RG174 - 1m
118008116	MTX-Cable SMA M - SMA F BH - RG174 - 3m
118008094	MTX-Cable SMA M - SMA F BH - CFD200 - 7.5m
118008046	MTX-Cable SMA M - SMA F BH - CFD200 - 5m
118012546	MTX-Cable SMA M - SMA F - RF240 - 5m
118008557	MTX-Cable SMA M - SMA F BH - LL195 - 5m
118008556	MTX-Cable SMA M - SMA F BH - LL195 - 10m
118008201	MTX-Cable SMA M - SMA F - RG58 - 10m
118008231	MTX-Cable SMA M - SMA F - RG58 - 5m

MTX-Cable SMA F FME F

- Connector: SMA F to FME F
- Cable: RG174 /LL195



ORDERING INFORMATION

118008002	MTX-Cable SMA F BH - FME F - RG174 - 200mm
118008549	MTX-Cable SMA F - FME F - LL195 - 10m
118008548	MTX-Cable SMA F - FME F - LL195 - 5m

MTX-Cable SMA M – N M

- Connector: SMA M to N M
- Cable: LL195



ORDERING INFORMATION

118008553	MTX-Cable SMA M - N M - LL195 - 10m
118008552	MTX-Cable SMA M - N M - LL195 - 5m

MTX-Cable FME F – N M

- Connector: FME F to N M
- Cable: RG58 /LL195



ORDERING INFORMATION

118008202	MTX-Cable FME F - N M - LL195 - 5m
-----------	------------------------------------

MTX-Magnetic Base with Cable



ORDERING INFORMATION

118009229	MTX-MagneticBase SMA M RP - RG174 - 2m (Base Connector SMA F RP)
118009230	MTX-MagneticBase SMA M - RG174 - 2m (Base Connector SMA F RP)
118009248	MTX-MagneticBase SMA M - RG174 - 3m (Base Connector SMA F)
118009249	MTX-MagneticBase FME F - RG174 - 3m (Base Connector SMA F)

MTX-RF Connector Adapter

ORDERING INFORMATION

118015064	MTX-RF Connector Adapter SMA M - FME M
118015051	MTX-RF Connector Adapter SMA M - N M
118015067	MTX-RF Connector Adapter SMA M - SMA F RP
118015066	MTX-RF Connector Adapter SMA M R/A - SMA F
118015068	MTX-RF Connector Adapter SMA M RP - SMA F
118015074	MTX-RF Connector Adapter SMA M RP R/A - SMA F
118015073	MTX-RF Connector Adapter SMA M RP R/A - SMA F RP
118015063	MTX-RF Connector Adapter SMA F - FME F
118015072	MTX-RF Connector Adapter SMA F - FME M
118015071	MTX-RF Connector Adapter SMA F - SMA F
118015058	MTX-RF Connector Adapter SMA F - N M
118015049	MTX-RF Connector Adapter FME M - TNC M
118015069	MTX-RF Connector Adapter FME F - FME F
118015043	MTX-RF Connector Adapter TNC M RP - TNC F

RF CABLES & CONNECTORS

SMA F to FME F



SMA M to FME M



SMA M to SMA F RP



SMA M RP to SMA F



SMA M R/A to SMA F



FME M to TNC M



TNC M RP - TNC F



SMA M to N M



MADRID

Alejandro Sánchez, 109
28019 Madrid
Tel 902 19 81 46
Fax 902 99 54 14

BARCELONA

@SantCugat Business Park
Av. Via Augusta 15-22, Edificio B2
08174 Sant Cugat del Vallés (Barcelona)
Tel 902 19 81 46
Fax 902 99 54 14

DURANGO

Tel 902 19 81 46
Fax 902 99 54 14

VALENCIA

Tel 902 19 81 46
Fax 902 99 54 14

SEVILLE

Calle Arquitectura, 1 – Torre 6
41015 Seville
Tel 902 19 81 46
Fax 902 99 54 14

PORTUGAL

Av. Coronel Eduardo Galhardo, 7, 1°C
1170-105 Lisbon
Tel +351 218 162 625
Fax +351 218 149 482

FRANCE

26 rue Gaudines
78100 - St Germain en Laye
Tel +33 139 04 29 40

APAC

9F, No. 156, Sec. 3, Minsheng E. Rd.,
Songshan Dist., Taipei City
10596, Taiwan Tel: +886 965 333 367



matrix.es | matrix@matrix.es